

DATASHEET

CATEGORY: Parallel clamp
 NAME: **Naval brass cable + tape parallel clamp**
 REFERENCE: **AT-011F**

PRODUCT DESCRIPTION

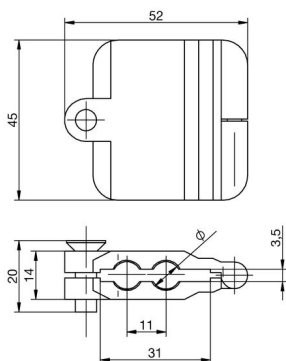
Naval brass parallel clamp for $\varnothing 8$ mm cable and 30 x 2 - 30 x 3.5 mm tape.



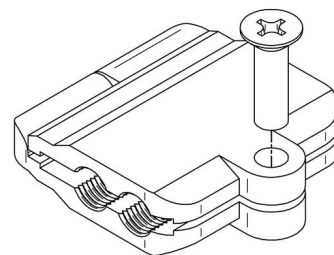
DATASHEET

Reference	AT-011F
Dimensions	45 x 45 x 14 mm
Tape	30 x 2 - 30 x 3.5 mm
Cable (diameter)	8 mm
Cable (section)	50 mm ²
Weight	131 g
Materials	Naval brass
Standards	Complies with UNE 21186, NF C 17-102, IEC 62305

> Diagram (mm)



> Components

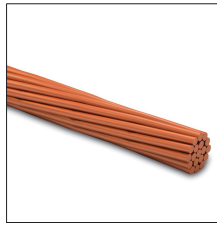


OTHER INFORMATION

> RELATED PRODUCTS



AT-052D
30x2mm tin-plated
copper tape



AT-050D
50mm² copper cable