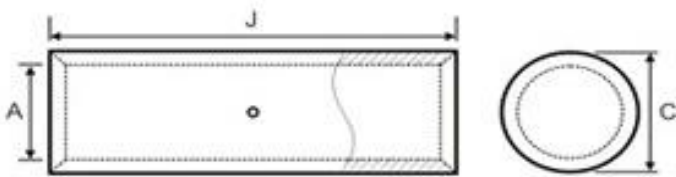


## CABLE FERRULE



Ferrules or Connectors are electrical Accessories used for securely connecting or joining two power cables together. Power cables are entered from either side of ferrule and are crimped for secure connection. Ferrules are made of electrolytic copper. Ferrules come in bare or tin plated finish.

- Material: Cable Ferrule made from Electrolytic Copper
- Range: Cable Range from 1.5 to 1000 mm<sup>2</sup>
- Finish: Lead Free Electro Tin Plated to prevent atmospheric corrosion
- Application: Used for termination & extension of copper conductors.



CABLE SIZE MM <sup>2</sup>	DIMENSIONS		
	A	C	J
1.5	1.8	3.7	12
2.5	2.4	4	15
4	3.1	4.8	15
6	3.8	5.5	15
10	4.5	6.2	20
16	5.4	7.1	20
20	6.3	7.7	22
25	6.8	8.8	32
35	8.2	10.6	36
50	9.5	12.4	40
70	11.3	14.7	45
95	13.5	17.4	45
120	15	19.4	45
150	16.5	21.2	55
185	18.5	23.5	60
240	21	26.5	80
300	23.5	30	85
400	28.5	36.5	85
500	30	39	100
550	31.7	41.5	110
630	35	45	110
800	39	50.6	150
1000	43	56.2	170

All of the above information, including drawings, illustrations and graphic designs, reflects our present understanding and is to the best of our knowledge and belief correct reliable. Users, however, should independently evaluate the suitability of each product for the desired application. Under no circumstances does this constitute an assurance any particular quality or performance. Such an assurance is only provided in the context of our product specifications or explicit contractual arrangements. Our liability for products set forth our standard terms and conditions of sale

