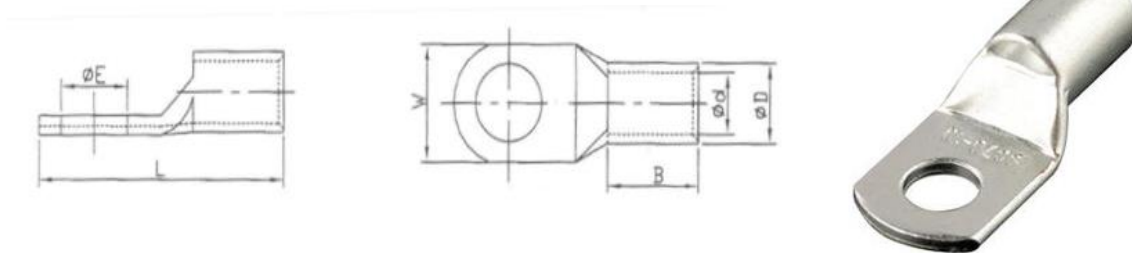


CABLE LUG

A lug is crimped mechanically or soldered to a cable ensuring a good connection. They are normally made out of tinned copper or aluminium and the conductor sizes can vary from small to large lugs



SIZE (MM)	Dimensions				
	ØE	Ød	W	B	L
1.5-4	4.2	1.8	8	5	16
1.5-5	5.2	1.8	10	5	17
1.5-6	6.5	1.8	10	5	18
2.5-4	4.2	2.4	8	7	18
2.5-5	5.2	2.4	10	7	20
2.5-6	6.5	2.4	10	7	20
2.5-8	8.4	2.4	12	7	23
4-4	4.2	3.1	10	7	20
4-5	5.2	3.1	10	7	20
4-6	6.5	3.1	10	7	20
4-8	8.4	3.1	12.5	7	23
6-4	4.2	3.8	10	9	24
6-5	5.2	3.8	10	9	24
6-6	6.5	3.8	12	9	24
6-8	8.4	3.8	12.5	9	26
6-10	10.5	4	15	9	28
10-5	4.2	4.5	12	9	25
10-6	5.2	4.5	12	9	25
10-8	6.5	4.5	12.5	9	27
10-10	8.4	4.5	15	9	29
10-12	10.5	4.5	17	9	31
16-5	5.2	5.4	12	12	30
16-6	6.5	5.4	12	12	30
16-8	8.4	5.4	12.5	12	30
16-10	10.5	5.4	16	12	33
16-12	13	5.4	17	12	35



SIZE (MM)	Dimensions				
	ØE	Ød	W	B	L
25-5	5.2	6.8	13	12	33
25-6	6.5	6.8	13	12	33
25-8	8.4	6.8	15	12	33
25-10	10.5	6.8	18	12	34
25-12	13	6.8	18	12	35
25-14	15	6.8	20	12	38
35-10	11	7.3	19	16	40
50-10	11	8.75	19	20	44
70-10	14	10.40	20	21	48
95-10	14	12.10	24	24	52
120-12	14	14.00	26	26	54
150-12	18	15.25	30	31	68
185-12	19	17.00	33	34	74
240-12	19	20.00	37	34	75

All of the above information, including drawings, illustrations and graphic designs, reflects our present understanding and is to the best of our knowledge and belief correct reliable. Users, however, should independently evaluate the suitability of each product for the desired application. Under no circumstances does this constitute an assurance any particular quality or performance. Such an assurance is only provided in the context of our product specifications or explicit contractual arrangements. Our liability for products set forth our standard terms and conditions of sale

