



Features

- 1) Built-in DALI2 protocol, no flicker in full dimming range;
- 2) Primary Push dimming function; Push dimming has state memory function;
- 3) Short circuit / over temperature / over voltage protection; reduce output current after over temperature;
- 4) Standby power consumption $\leq 0.5W$;
- 5) 5 years' warranty.

Parameters

Input	voltage range	Minimum value	198V AC
		Typical value	230V AC
		Max	264V AC
	Frequency Range	Minimum value	47Hz
		Typical value	50/60Hz
		Max	63Hz
	DC voltage range	200-240V DC	
	Rated voltage	220-240V AC	50Hz /60Hz
	Input Current	0.22A MAX	
	Inrush current	15A (100us half current) @ 230V AC	
	Total harmonic distortion	full load output, @ 230Vac total harmonic distortion is less than 13%	
	Power Factor	0.95 (@ 230Vac, under full load)	
	Standby power consumption	<0.5W	
	No-load power consumption	$\leq 1W$	
Leak current	<0.5mA/240V		
Work efficiency	85% max		
Output	Operating mode	CC	
	Load type	LED	
	Start Time	$\leq 1S$ (@230Vac Under full load)	
	Ripple current	$\pm 5\%$ (@230Vac, 100% load, LED load)	
	Strobe requirements	Full range without strobe (stroboscope test less than 2%)	
	No-load output voltage	75V Max	
	Load output voltage	9-58V	
	Full load output power	40W	
	Load current	Typical value	500mA(9-58V) 550mA(9-58V) 600mA(9-58V) 650mA(9-58V) 700mA(9-58V) 750mA(9-53V) 800mA(9-50V) 850mA(9-47V) 900mA(9-45V)

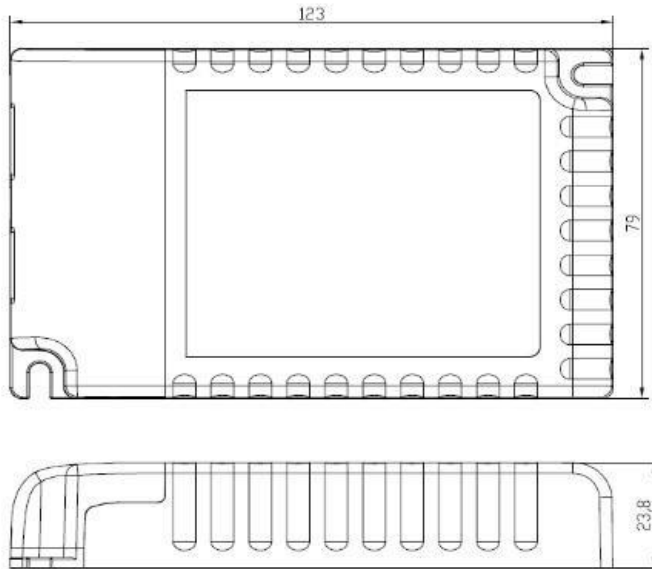


			950mA(9-42V) 1000mA(9-40V) 1050mA(9-38V)
	Constant voltage accuracy / constant current accuracy	±5%	
Control Method	Primary PUSH dimming	Yes, Primary PUSH dimming (Maximum lead length: 20M)	
	1-10V (0-10V) dimming	Yes, secondary 0-10V dimming, the darkest below 1V does not turn off	
	Dimming range	2%-100%	
	Potentiometer dimming	100K Potentiometer	
	DALI dimming	Yes (max lead length: 300m)	
Exception Protection Requirements	Output over load protection	Yes	
	Output no load protection	Yes, self-recovery (with query function)	
	Output over temperature protection	Yes, without self recovery function (Can be inquired)	
	Output short circuit protection	Yes, without self recovery function (Can be inquired)	
Operating Environment	Working environment temperature / humidity	Typical value	-25 °C... + 50 °C humidity: 85% (Non-condensing)
	Storage temperature/ humidity	-40 °C... + 80 °C 10 ~ 95% RH (non-condensing)	
	Max. Case Temp (Tc)	85°C	
Certification standards	Safety standards	EN61347-1, EN61347-2-13, EN62493, EN60598-1	
	Electromagnetic compatibility (EMC) standards	EN55015, EN61547, EN61000-3-2, EN61000-3-3	
	Environmental requirements	Compliant with EU RoHS requirements	
	Certified	CE ENEC	
others	Withstand voltage	3750Vac 5mA	60S (Input to output)
	Input / output (terminal / lead) specifications	Push-type terminal block Wire diameter: 0.75-1.5mm ²	
	Degrees of protection	IP20	
	Product Category	Class II appliances	
	Packaging requirement	Independent installation	
	Installation dimension	123 * 79 * 23.8mm	
	Packaging requirements	PE bag + white box + manual + partition + outer box (K = A)	
	Weight	182 g	
Warranty	5 years warranty @ Ta 230V full load		



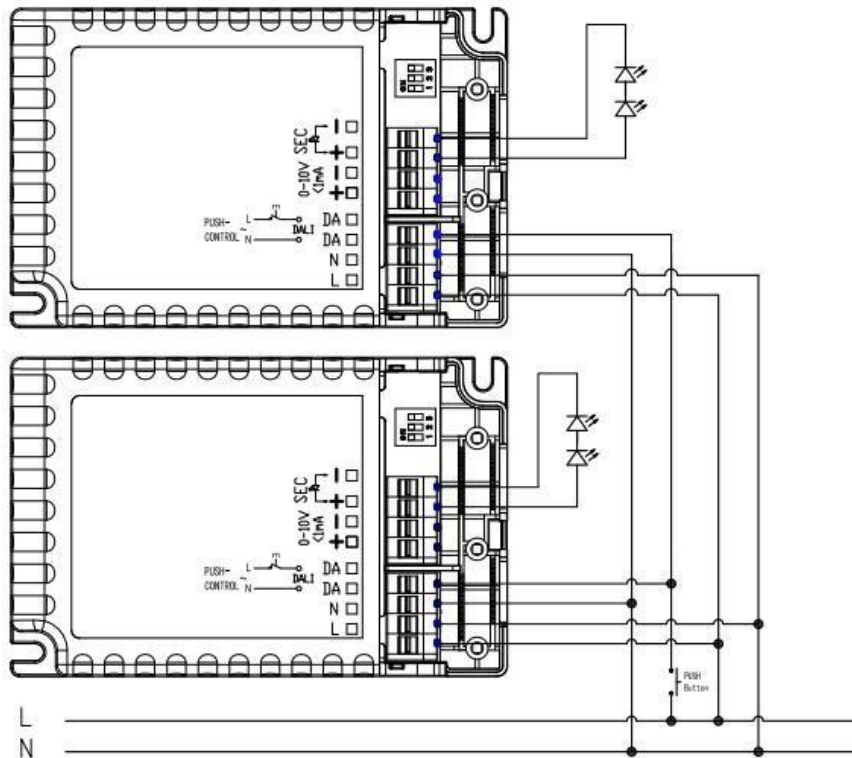
SCAN QR CODE

3. Dimension (Unit: mm)

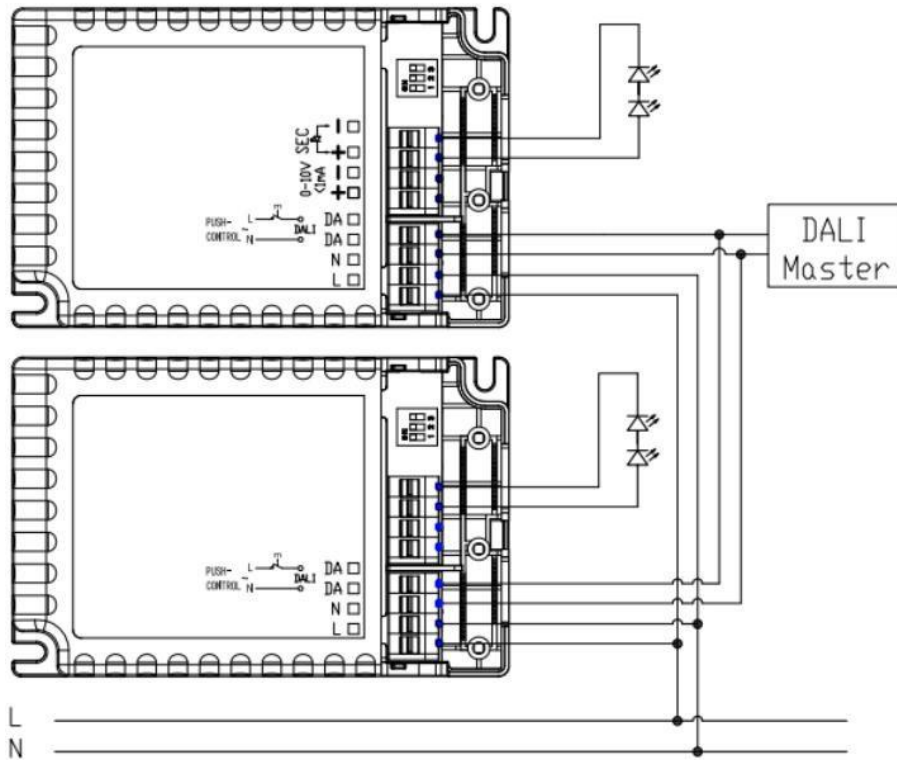


4. Wiring Diagram

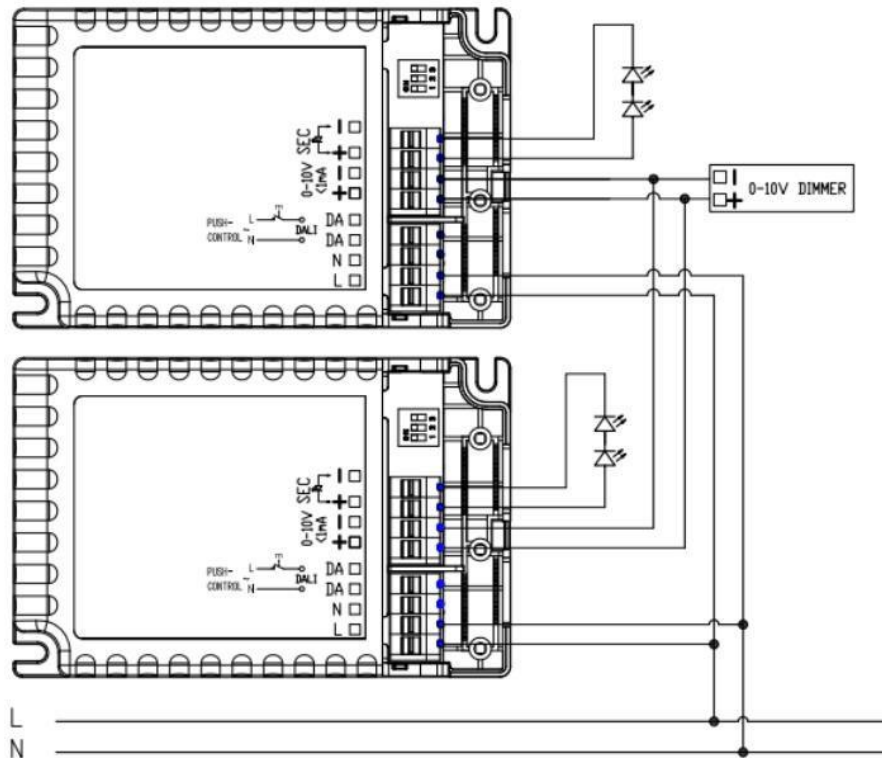
1) PUSH Dimming wiring diagram



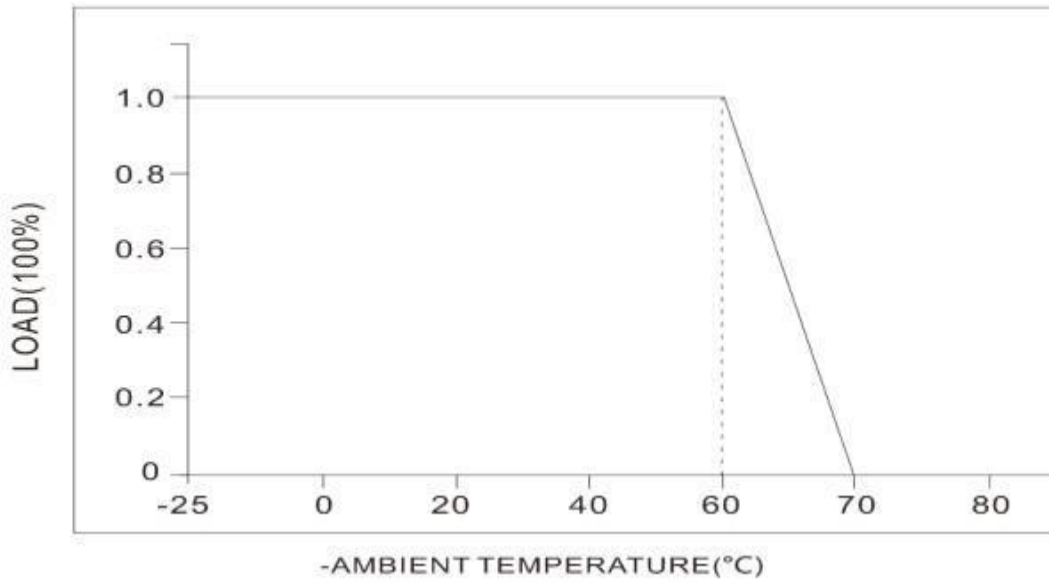
2) DALI wiring diagram



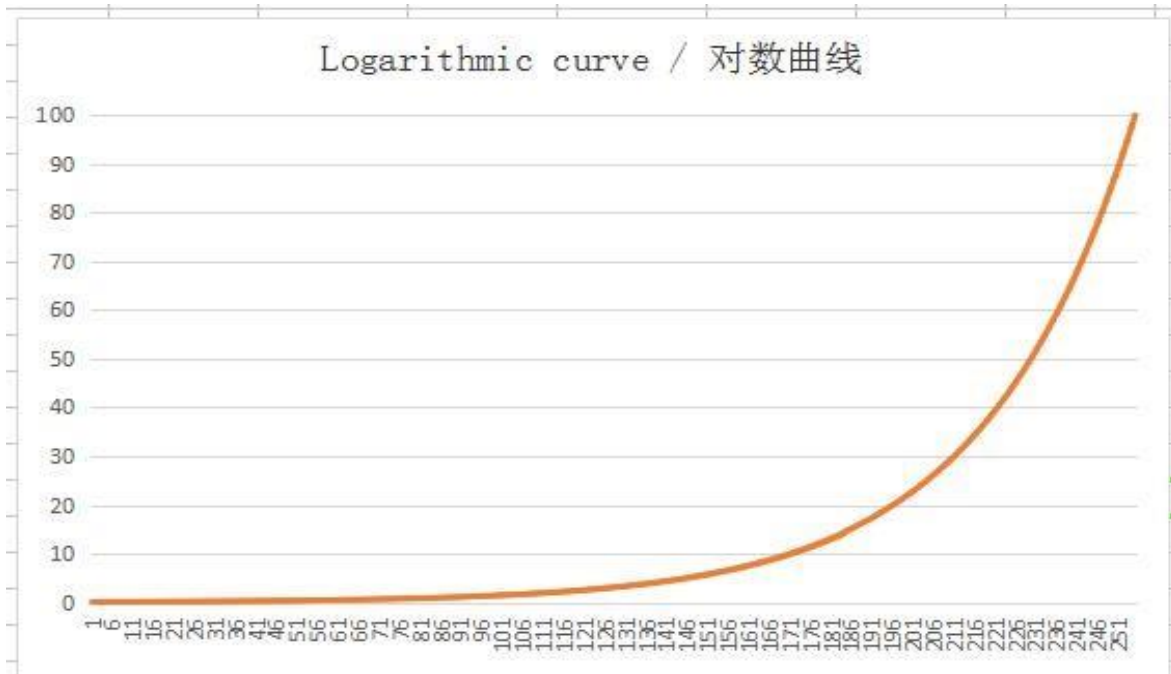
3) 0-10V dimming wiring diagram

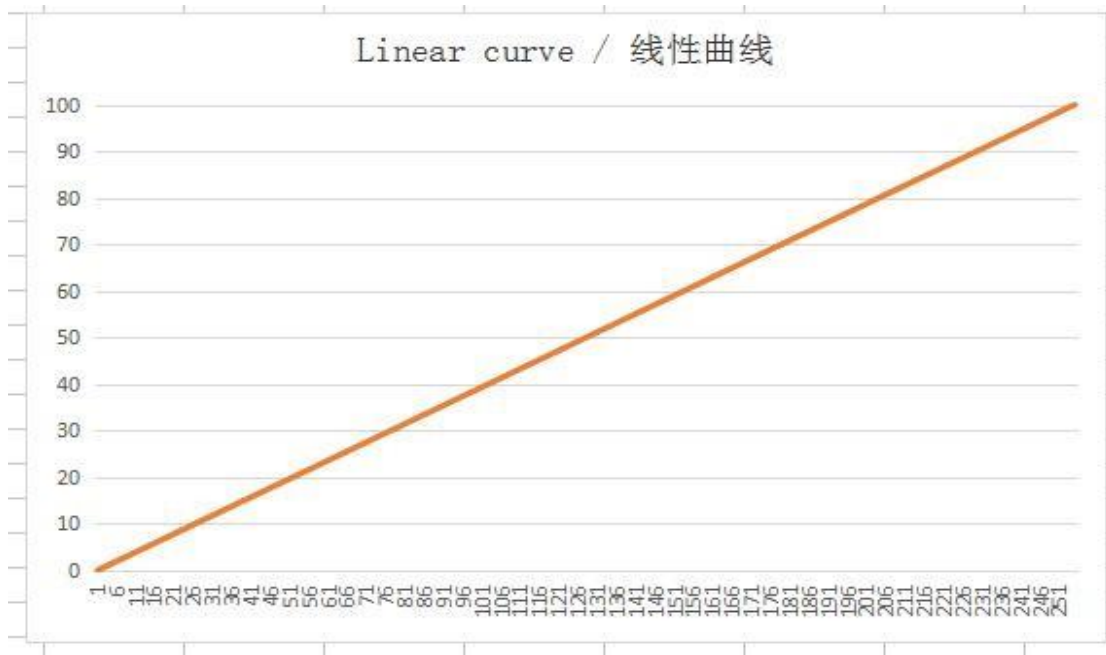


Derating



Dimming curve





Current gear setting

Current / voltage gear setting	1	2	3	4
1050MA	ON	ON	ON	ON
1000MA	-	ON	ON	ON
950MA	ON	-	ON	ON
900MA	-	-	ON	ON
850MA	ON	ON	ON	-
800MA	-	ON	ON	-
750MA	ON	-	ON	-
700MA	-	-	ON	-
650MA	ON	ON	-	-
600MA	-	ON	-	-
550MA	ON	-	-	-
500MA	-	-	-	-



ON/OFF & Description of Dimming Operation

A. Short press the PUSH switch (short press time 0.1S-1S), the LED driver will turn on or off.

B. Dimming:

Press and hold the PUSH switch (1S-8S), the LED driver can achieve dimming, brightening or dimming, the dimming range is 2-100%. C.

Memory:

PUSH dimming has dimming memory function. D. Dimming

synchronization:

The power connected to the same PUSH switch can be synchronized by pressing and holding the PUSH switch for longer than 15S E.

DALI dimming mode:

Connect the power supply to the DALI system, and it can be dimmed by the DALI host. The dimming range is 0-100%.

Matters needing Attention

- 1) The LED string must be connected to the load before turning on the input power, otherwise the LED string may be damaged.
- 2) After the LED driver input is powered off, there will be a residual voltage at the output, which can be maintained for about 3 minutes.

All of the above information, including drawings, illustrations and graphic designs, reflects our present understanding and is to the best of our knowledge and belief correct reliable. Users, however, should independently evaluate the suitability of each product for the desired application. Under no circumstances does this constitute an assurance any particular quality or performance. Such an assurance is only provided in the context of our product specifications or explicit contractual arrangements. Our liability for products set forth our standard terms and conditions of sale



SCAN QR CODE