

Acti 9 CUBD



DISTRIBUTION BOARD SURFACE MOUNTED 125A ISOLATOR

Reference	Description	Current rating
A9EDB04S125	ACTI 9 DB SURFACE 04 WAY	125A
A9EDB06S125	ACTI 9 DB SURFACE 06 WAY	125A
A9EDB08S125	ACTI 9 DB SURFACE 08 WAY	125A
A9EDB12S125	ACTI 9 DB SURFACE 12 WAY	125A
A9EDB16S125	ACTI 9 DB SURFACE 16 WAY	125A
A9EDB24S125	ACTI 9 DB SURFACE 24 WAY	125A



DISTRIBUTION BOARD SURFACE MOUNTED 160A ISOLATOR

Reference	Description	Current rating
A9EDB04S160	ACTI 9 DB SURFACE 04 WAY	160A
A9EDB06S160	ACTI 9 DB SURFACE 06 WAY	160A
A9EDB08S160	ACTI 9 DB SURFACE 08 WAY	160A
A9EDB12S160	ACTI 9 DB SURFACE 12 WAY	160A
A9EDB16S160	ACTI 9 DB SURFACE 16 WAY	160A
A9EDB24S160	ACTI 9 DB SURFACE 24 WAY	160A

DISTRIBUTION BOARD SURFACE MOUNTED 250A ISOLATOR

Reference	Description	Current rating
A9EDB06S250	ACTI 9 DB SURFACE	250A
A9EDB08S250	ACTI 9 DB SURFACE	250A
A9EDB12S250	ACTI 9 DB SURFACE	250A
A9EDB16S250	ACTI 9 DB SURFACE	250A
A9EDB24S250	ACTI 9 DB SURFACE	250A

DISTRIBUTION BOARD FLUSH MOUNTED 125A ISOLATOR

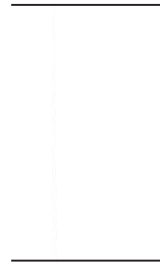
Reference	Description	Current rating
A9EDB04F125	ACTI 9 DB FLUSH	125A
A9EDB06F125	ACTI 9 DB FLUSH	125A
A9EDB08F125	ACTI 9 DB FLUSH	125A
A9EDB12F125	ACTI 9 DB FLUSH	125A
A9EDB16F125	ACTI 9 DB FLUSH	125A
A9EDB24F125	ACTI 9 DB FLUSH	125A

EXTENSION BOX

Reference	Description
A9EDBEXT160	ACTI 9 DB EXTENSION BOX W/O INS160
A9EDBEXT250	ACTI 9 DB EXTENSION BOX W/O MCCB OR INS250

ACTI 9 ROW DISTRIBUTION BOARD

Reference	Description
A9EROW0215F	ACTI 9 METAL ROW DB 2x15 MODULE FLUSH
A9EROW0215S	ACTI 9 METAL ROW DB 2x15 MODULE SURFACE
A9EROW0315F	ACTI 9 METAL ROW DB 3x15 MODULE FLUSH
A9EROW0315S	ACTI 9 METAL ROW DB 3x15 MODULE SURFACE



Extension Box

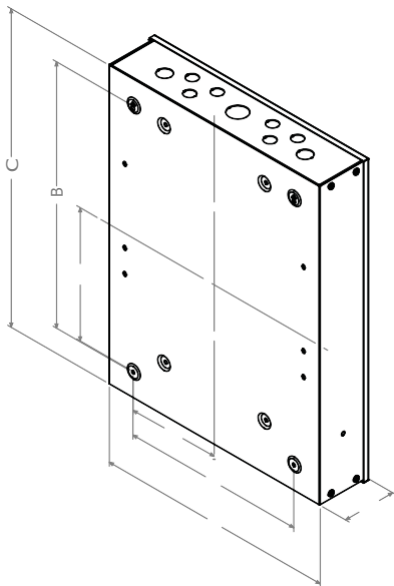
Characteristics

Main characteristics

Compliance with standards		KE - IEC 61439
Rated current (In)	Vertical 3 phase	125 A / 160 A / 250 A
Permissible rated short-time withstand current (Icw)	Vertical 3 phase	25 kA / 50ms
Permissible peak current (Ipk)	Vertical 3 phase	34 kA
Operating voltage (Ue)	Single phase	230 V, 50 Hz
	Vertical 3 phase	415 V, 50 Hz

Additional characteristics

Degree of protection	IP20
Operating temperature	-35°C to +70°C
Color	RAL 9001
Materials	Metal enclosure: high quality epoxy polyester based powder surface coating.



Dimensions (mm)

Board Type	A	B	C	D	E	F	G
4 Way	165	330	420	160	320	420	120
6 Way	202.5	405	495	160	320	420	120
8 Way	202.5	405	495	160	320	420	120
12 Way	265	530	620	160	320	420	120
16 Way	327.5	655	745	160	320	420	120
24 Way	452.5	905	995	160	320	420	120

Weight (Kg)

Type	Acti9 Distribution Board
4ways	11.0
6ways	13.0
8ways	14.0
12ways	17.0
16ways	20.0
24ways	29.0