

Easy9

Distribution Board



Function

The Flush / surface mounting enclosure consists of:

- Available in 4, 6, 8, 12, and 16 ways
- Straight busbar distribution board with fishbone
- Incomer provision: isolator: upto 125 A.
- Outgoer provision: MCB.

Distribution Board

Flush Mount

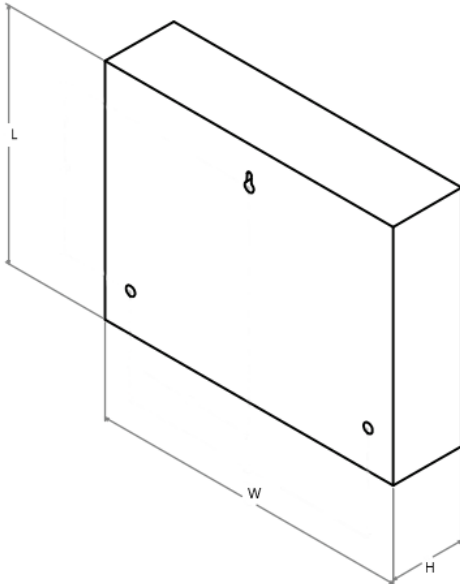
Reference	Description	No.Ways
EZ9EDB04F125A	4 Ways Flush 125A	4
EZ9EDB06F125A	6 Ways Flush 125A	6
EZ9EDB08F125A	8 Ways Flush 125A	8
EZ9EDB012F125A	12 Ways Flush 125A	12
EZ9EDB016F125A	16 Ways Flush 125A	16

Surface Mount

Reference	Description	No.Ways
EZ9EDB04S125A	4 Ways Surface 125A	4
EZ9EDB06S125A	6 Ways Surface 125A	6
EZ9EDB08S125A	8 Ways Surface 125A	8
EZ9EDB012S125A	12 Ways Surface 125A	12
EZ9EDB016S125A	16 Ways Surface 125A	16

Dimensions (mm)

Board Type	Length	Width	Height
4 Way	420	320	95
8 Way	495	320	95
12 Way	645	320	95
16 Way	745	320	95



Characteristics

Main characteristics

Compliance with standards	IEC 60439 - KEBS	
Rated current (In)	Vertical 3 phase	125 A
Permissible rated short-time withstand current (Isw)	Vertical 3 phase	17 kA for 1s
Permissible peak current (Ipk)	Vertical 3 phase	34 kA
Operating voltage (Ue)	Single phase	230 V, 50 Hz
	Vertical 3 phase	415 V, 50 Hz

Additional characteristics

Degree of protection	IP31	
Operating temperature	-25°C to +50°C	
Color	RAL 9001	
Materials	Metal enclosure: high quality epoxy polyester based powder surface coating.	

Weight (Kg)

Type	Easy9 Distribution Board
4ways	8.72
6ways	10.00
8ways	10.92
12ways	13.90
16ways	16.16