



### Main

Range of product	Harmony Electromechanical Relays
Product or component type	Socket
Contact terminal arrangement	Separate
Product compatibility	Plug-in relay RXM with 3 C/O contact
Shape of pin	Flat
Device short name	RXZ
Sale per indivisible quantity	10

### Complementary

[I <sub>th</sub> ] conventional free air thermal current	10 A
[U <sub>e</sub> ] rated operational voltage	< 250 V
Connections - terminals	Connector, 1 x 0.25...1 x 2.5 mm <sup>2</sup> (AWG 22...AWG 14) flexible with cable end Connector, 2 x 0.25...2 x 1 mm <sup>2</sup> (AWG 22...AWG 17) flexible with cable end Connector, 1 x 0.5...1 x 2.5 mm <sup>2</sup> (AWG 20...AWG 14) solid without cable end Connector, 2 x 0.5...2 x 1.5 mm <sup>2</sup> (AWG 20...AWG 16) solid without cable end
Tightening torque	< 1 N.m for M3 screw(s)
Fixing mode	By screw (panel) Clip-on (35 mm symmetrical DIN rail)
Marking	CE
Width	27 mm
Net weight	0.066 kg

### Environment

Standards	IEC 61984
Product certifications	UL Lloyd's CSA

Ambient air temperature for storage	-40...85 °C
Ambient air temperature for operation	-40...55 °C
IP degree of protection	IP20 conforming to EN/IEC 60529
Dielectric strength	2500 V

### Packing Units

Package 1 Weight	0.061 kg
Package 1 Height	0.610 dm
Package 1 width	0.270 dm
Package 1 Length	0.750 dm

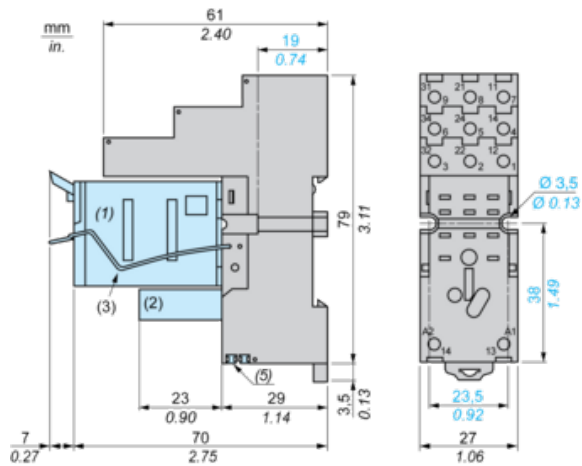
### Offer Sustainability

Sustainable offer status	Green Premium product
REACH Regulation	<a href="#">REACH Declaration</a>
REACH free of SVHC	Yes
EU RoHS Directive	Pro-active compliance (Product out of EU RoHS legal scope) <a href="#">EU RoHS Declaration</a>
Toxic heavy metal free	Yes
Mercury free	Yes
RoHS exemption information	<a href="#">Yes</a>
China RoHS Regulation	<a href="#">China RoHS declaration</a>
Environmental Disclosure	<a href="#">Product Environmental Profile</a>
WEEE	The product must be disposed on European Union markets following specific waste collection and never end up in rubbish bins

### Contractual warranty

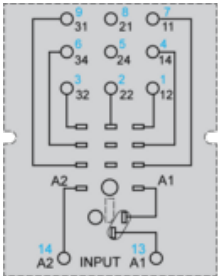
Warranty	18 months
----------	-----------

Dimensions



- (1) Relays
- (2) Protection module
- (3) Maintaining clamp
- (4) 2 elongated holes  $\text{Ø } 3.5 \text{ mm} \times 6.5 \text{ mm} / \text{Ø } 0.13 \text{ in.} \times 0.25 \text{ in.}$
- (5) 2 bus jumpers

Wiring Diagram



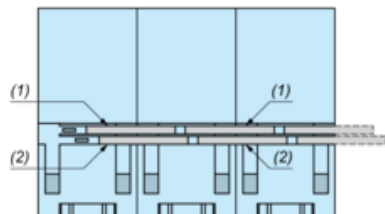
Symbols shown in blue correspond to Nema marking.

---

Bus Jumpers Mounting on Sockets with Separate Contacts

---

Example of RXZS2 bus jumper mounting on sockets (view from below)



(1) 2 bus jumpers (polarity A2)

(2) 2 bus jumpers (polarity A1)