

B22/E27 UNIVERSAL LAMPHOLDER- STRAIGHT



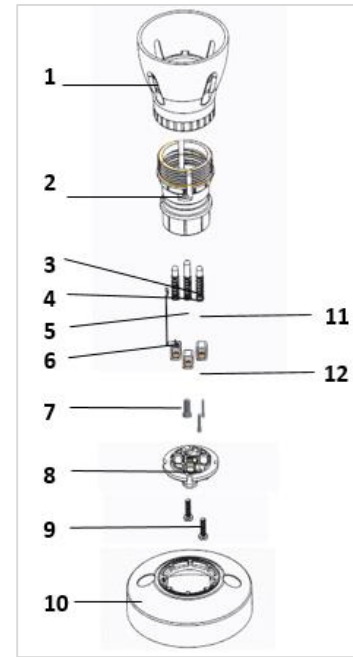
Universal bulb holders can be used on both, **screw bulb** type (B22) and **pin bulb** type (E27). The pedestal is made of PBT which is heat, abrasive and fire resistant. More so, the copper used is of abrasive resistance providing utmost safety. The bulb holder measures approx. 7cm base 7.7cm height and 5cm diameter on bulb holder.

SPECIFICATIONS

Terminal: Fashion design with high quality terminal
Design: Straight lamp holder
Voltage: 220-250V
Product Name: 2 in 1 Lamp Holder (B22/E27)
Application: Home, Office, Industrial
Weight (kg): 0.055

KEY FEATURES

- ✓ Used on screw bulb type and bulb type
- ✓ Durable
- ✓ Practical



S/N	Part Name	Material	Quantity
1	Lampshade	04 Bakelite particles	1
2	Pedestal	PBT	1
3	Long copper sleeve	H68(φ3.5*9.0mm)	1
4	Short copper sleeve	H68(φ3.5*6.0mm)	2
5	Return spring	Return spring	1
6	Conductive sheet	H62/Y2	1
7	Eleven-shaped cylindrical flat-end screws	M3.5*8.5 coppering	3
8	Pressing plate	PC(grey)	1
9	Eleven-shaped pan head tapping screws	ST2.9*8 blue zinc plated	2
10	Bottom base	04 Bakelite particles	1
11	Combination spring	Stainless steel	1
12	Hasp	coppering	3