



## MECHANICAL SHEAR BOLT TERMINAL LUGS BLMT FOR LOW, MEDIUM AND HIGH VOLTAGE CABLE ACCESSORIES UP TO 84 kV

### KEY FEATURES

- Wide application range
- Compact design
- Can be used with almost every type of conductor and material
- Torque-controlled shear-head bolts guarantee a good electrical contact
- Easy installation with standard socket spanner
- Pre-engineered design for perfect fit in high and medium voltage cable accessories up to 84 kV
- Connection to aluminium or copper busbar
- Can be installed indoor or outdoor
- Tested according to IEC 61238-1 class A

Mechanical shear bolt terminal lugs BLMT are designed for use in low, medium and high voltage applications. These products cover conductor sizes from 10 to 1000 mm<sup>2</sup>, only three sizes cover conductor sizes from 25 mm<sup>2</sup> to 400 mm<sup>2</sup>. All products consist of a tin-plated body, shear-head bolts and inserts for small conductor sizes.

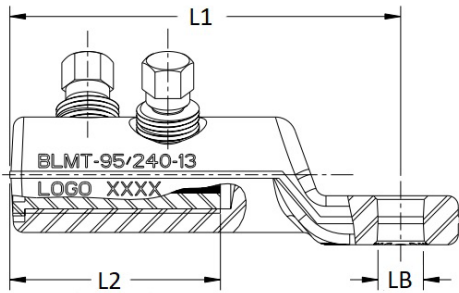
Made of special aluminium alloy, these contact bolts are double shear-head bolts with hexagon heads. The bolts are treated with a highly lubricating agent. Contact bolts are irremovable once their heads have been sheared off. The Lug body is made of a high-tensile, tin-plated aluminium alloy. The internal surface of the conductor holes are grooved.

Lugs are suitable for outdoor and indoor applications and are available with different palm hole sizes. The bolted fitting featured herein was developed specifically for use in high and medium voltage cable accessories up to 84 kV. They may also be used in the 1 kV range.

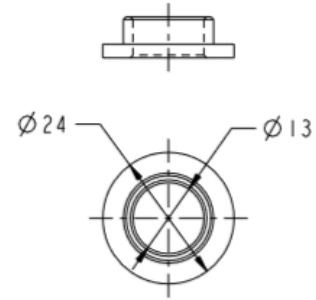
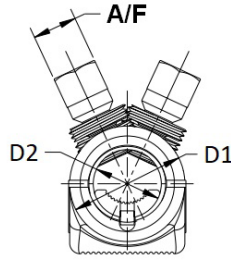
Before using mechanical lugs in cable accessories, confirm that they are suitable for the given application and if necessary consult the manufacturer.

**Customers can count on consistent, high quality products, driven by TE's proven innovation and backed by our extraordinary customer support.**

# Mechanical shear bolt terminal lugs BLMT



One-hole Lug



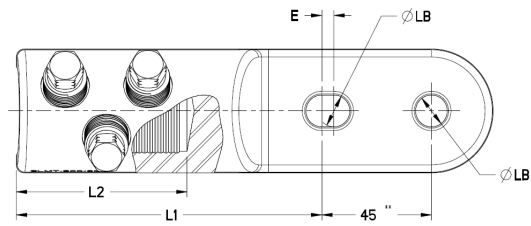
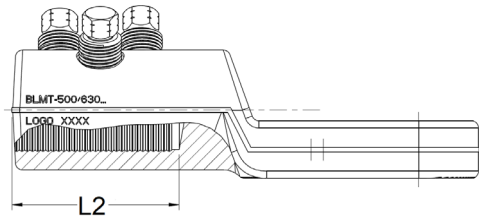
Reducing bush - BLM-REDUCER-13/17

## PRODUCT SELECTION INFORMATION - SINGLE HOLE LUG

Description	Conductor cross sectional range and Palm Hole Diameter	Al				Cu				Palm Hole Diameter (mm) LB	Dimensions (mm)				Contact Bolts Quantity	Head Size AF (mm)
		Circular Stranded	Circular Solid	Sector Stranded	Sector Solid	Circular Stranded	Circular Solid	Sector Stranded	Flexible Circular		L1	L2	D1	D2		
BBLMT-25/95-13	mm <sup>2</sup>	25-95	25-95	25-70	-	16-95	10-50	25-70	25-35/70	13	60	30	24	12.8	1	10
	(mm)	5.6-12.5	5.5-11	-	-	4.6-12.5	3.5-8	-	6.3-9.2/11-12							
BLMT-25/95-17	mm <sup>2</sup>	25-95	25-95	25-70	-	16-95	10-50	25-70	25-35/70	17	60	30	24	12.8	1	10
	(mm)	5.6-12.5	5.5-11	-	-	4.6-12.5	3.5-8	-	6.3-9.2/11-12							
BLMT-16/70S-95R-13/17*	mm <sup>2</sup>	25-95	16-95	25-70	-	10-95	-	25-70	-	13 / 17	60	30	24	12.8	1	10
	(mm)	5.6-12.5	4.1-11	-	-	3.6-12.5	-	-	-							
BLMT-35/150-13	mm <sup>2</sup>	35-150	35-150	50-95	50-120	35-150	35-50	50-95	50-70	13	86	35	28	15.8	1	13
	(mm)	6.8-15	6.5-14	-	-	6.6-15	6.5-8	-	9.2-13.1							
BLMT-35/150-17	mm <sup>2</sup>	35-150	35-150	50-95	50-120	35-150	35-50	50-95	50-70	17	86	35	28	15.8	1	13
	(mm)	6.8-15	6.5-14	-	-	6.6-15	6.5-8	-	9.2-13.1							
BLMT-95/240-13	mm <sup>2</sup>	70-240	95-240	95-150	95-150	70-240	-	95-150	95/150-185	13	112	60	33	20	2	13
	(mm)	9.3-19.2	10.5-18	-	-	9.3-19.2	-	-	13-14.3/16.5-19							
BLMT-95/240-17	mm <sup>2</sup>	70-240	95-240	95-150	95-150	70-240	-	95-150	95/150-185	17	112	60	33	20	2	13
	(mm)	9.3-19.2	10.5-18	-	-	9.3-19.2	-	-	13-14.3/16.5-19							
BLMT-50/185S-240R-13/17*	mm <sup>2</sup>	50-240	50-240	95-185	50-150	50-240	95-185	-	-	13 / 17	112	60	33	20	2	13
	(mm)	7.7-19.2	7.2-17.6	-	-	9.3-19.2	-	-	-							
BLMT-120/300-13	mm <sup>2</sup>	120-300	150-300	120-185	120-240	120-300	-	120-185	240-300	13	115	65	37	24	2	13
	(mm)	12.7-23.1	12.9-19.8	-	-	12.7-22.6	-	-	21-23.5							
BLMT-120/300-17	mm <sup>2</sup>	120-300	150-300	120-185	120-240	120-300	-	120-185	240-300	17	115	65	37	24	2	13
	(mm)	12.7-23.1	12.9-19.8	-	-	12.7-22.6	-	-	21-23.5							
BLMT-150/400 mk2-13	mm <sup>2</sup>	150-400	150-400	150-240	185-240	150-400	-	150-240	240/300	13	122	80	42	25.5	3	13
	(mm)	13.7-24.6	12.9-22.2	-	-	13.7-24.6	-	-	13-21/23.5-25							
BLMT-150/400 mk2-17	mm <sup>2</sup>	150-400	150-400	150-240	185-240	150-400	-	150-240	240/300	17	122	80	42	25.5	3	13
	(mm)	13.7-24.6	12.9-22.2	-	-	13.7-24.6	-	-	13-21/23.5-25							
BLMT-150/400 mk2-21	mm <sup>2</sup>	150-400	150-400	150-240	185-240	150-400	-	150-240	240/300	21	122	80	42	25.5	3	13
	(mm)	13.7-24.6	12.9-22.2	-	-	13.7-24.6	-	-	13-21/23.5-25							
BLMT-150/400-13/17*	mm <sup>2</sup>	150-400	150-400	150-240	185-240	150-400	-	150-240	300	13 / 17	122	80	42	25.5	3	13
	(mm)	13.7-24.6	12.9-22.2	-	-	13.7-24.6	-	-	23.5-25							
BLMT-500/630 mk2-13	mm <sup>2</sup>	500-630	500-630	-	-	500-630	-	-	500	13	125	70	50	33	3	13
	(mm)	25.3-32.5	24.0-28.6	-	-	25.3-32.5	-	-	31-32.5							
BLMT-500/630 mk2-17	mm <sup>2</sup>	500-630	500-630	-	-	500-630	-	-	500	17	125	70	50	33	3	13
	(mm)	25.3-32.5	24.0-28.6	-	-	25.3-32.5	-	-	31-32.5							
BLMT-500/630 mk2-21	mm <sup>2</sup>	500-630	500-630	-	-	500-630	-	-	500	21	125	70	50	33	3	13
	(mm)	25.3-32.5	24.0-28.6	-	-	25.3-32.5	-	-	31-32.5							
BLMT-630/800RIAL-13/17*	mm <sup>2</sup>	630	630-800	-	-	630	-	-	-	13 / 17	125	70	50	33	3	13
	(mm)	28.7-32.5	27.3-32.1	-	-	28.7-32.5	-	-	-							
BLMT-800/1000-17	mm <sup>2</sup>	800-1000	800-1000	-	-	800-1000	-	-	-	17	153	85	60	40	4	13
	(mm)	32.5-39.5	30.9-36	-	-	32.5-39.5	-	-	-							
BLMT-800/1000-21	mm <sup>2</sup>	800-1000	800-1000	-	-	800-1000	-	-	-	21	153	85	60	40	4	13
	(mm)	32.5-39.5	30.9-36	-	-	32.5-39.5	-	-	-							

\* Supplied with Reducing Bush BLM-REDUCER-13/17 which gives the option to connect the lug with a M12 or M16 bolt

# Mechanical shear bolt terminal lugs BLMT

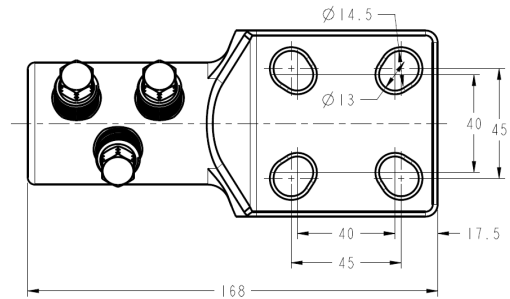
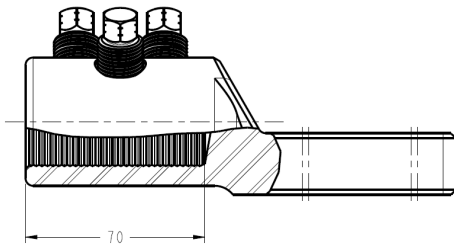


Two-hole Lug

## PRODUCT SELECTION INFORMATION - DOUBLE HOLES LUG

Description	Conductor cross sectional range and Palm Hole Diameter	Al				Cu				Palm Hole Diameter (mm) LB	Dimensions (mm)						Contact Bolts Quantity	Head Size AF (mm)
		Circular Stranded	Circular Solid	Sector Stranded	Sector Solid	Circular Stranded	Circular Solid	Sector Stranded	Flexible Circular		E	L	L1	L2	D1	D2		
BLMT-25/ 95-2x13-K1	mm <sup>2</sup>	25-95	16-95	25-70	-	10-95	10-50	25-70	-	2x13	18	50	117	35	24	13	2	10
	(mm)	5.6-12.5	4.1-11	-	-	3.6-12.5	3.6-8	-	-									
BLMT-95/ 240-2x13-K1	mm <sup>2</sup>	70-240	95-300	95-150	95-150	70-240	-	95-150	95 & 150	2x13	18	50	151.5	60	33	19.5	2	13
	(mm)	9.3-19.2	10.5-19	-	-	9.3-19.2	-	-	13-14.3 & 16.5-19									
BLMT-150/400 mk2-2x13	mm <sup>2</sup>	150-400	150-400	150-240	185-240	150-400	-	150-240	240/300	2x13	5	45	122	80	42	25.5	3	13
	(mm)	13.7-24.6	12.9-22.2	-	-	13.7-24.6	-	-	13-21/23.5-25									
BLMT-150/400 mk2-2x13-50	mm <sup>2</sup>	150-400	150-400	150-240	185-240	150-400	-	150-240	240/300	2x13	10	50	122	80	42	25.5	3	13
	(mm)	13.7-24.6	12.9-22.2	-	-	13.7-24.6	-	-	13-21/23.5-25									
BLMT-150/400 mk2-2x17	mm <sup>2</sup>	150-400	150-400	150-240	185-240	150-400	-	150-240	240/300	2x17	5	45	122	80	42	25.5	3	13
	(mm)	13.7-24.6	12.9-22.2	-	-	13.7-24.6	-	-	13-21/23.5-25									
BLMT-500/630 mk2-2x13	mm <sup>2</sup>	500-630	500-630	-	-	500-630	-	-	500	2x13	5	45	125	70	50	33	3	13
	(mm)	25.3-32.5	24.0-28.6	-	-	25.3-32.5	-	-	31-32.5									
BLMT-500/630 mk2-2x13-50	mm <sup>2</sup>	500-630	500-630	-	-	500-630	-	-	500	2x13	10	50	125	70	50	33	3	13
	(mm)	25.3-32.5	24.0-28.6	-	-	25.3-32.5	-	-	31-32.5									
BLMT- 800/1000-2x13	mm <sup>2</sup>	800-1000	800-1000	-	-	800-1000	-	-	-	2x13	10	50	153	85	60	40	4	13
	(mm)	32.5-39.5	30.9-36	-	-	32.5-39.5	-	-	-									

\* Supplied with Reducing Bush BLM-REDUCER-13/17 which gives the option to connect the lug with a M12 or M16 bolt



Quad-hole Lug

## PRODUCT SELECTION INFORMATION - FOUR HOLES LUG

Description	Conductor cross sectional range and Palm Hole Diameter	Al				Cu				Contact Bolts Quantity	Head Size AF (mm)
		Circular Stranded	Circular Solid	Sector Stranded	Sector Solid	Circular Stranded	Circular Solid	Sector Stranded	Flexible Circular		
BLMT-500/630 mk2- 4x13(40)/14.5(45)	mm <sup>2</sup>	500-630	500-630	-	-	500-630	-	-	500	3	13
	(mm)	25.3-32.5	24.0-28.4	-	-	25.3-32.5	-	-	31-32.5		

### FOR MORE INFORMATION: TE Technical Support Centers

USA:	+ 1 800 327 6996
Canada:	+ 1 (905) 475-6222
Mexico:	+ 52 (0) 55-1106-0800
Latin/S. America:	+ 54 (0) 11-4733-2200
France:	+ 33 380 583 200
UK:	+ 44 0870 870 7500
Germany:	+ 49 896 089 903
Spain:	+ 34 916 630 400
Italy:	+ 39 333 250 0915
Benelux:	+ 32 16 508 695
Russia:	+ 7 495-790 790 2-200
China:	+ 86 (0) 400-820-6015

[te.com/energy](http://te.com/energy)

©2021 TE Connectivity. All Rights Reserved. EPP-2286-08/20-EN

TE Connectivity and the TE connectivity (logo) are trademarks of the TE Connectivity Ltd. family of companies. Other logos, product and Company names mentioned herein may be trademarks of their respective owners. While TE has made every reasonable effort to ensure the accuracy of the information in this brochure, TE does not guarantee that it is error-free, nor does TE make any other representation, warranty or guarantee that the information is accurate, correct, reliable or current. TE reserves the right to make any adjustments to the information contained herein at any time without notice. TE expressly disclaims all implied warranties regarding the information contained herein, including, but not limited to, any implied warranties of merchantability or fitness for a particular purpose. The dimensions in this brochure are for reference purposes only and are subject to change without notice. Specifications are subject to change without notice. Consult TE for the latest dimensions and design specifications.