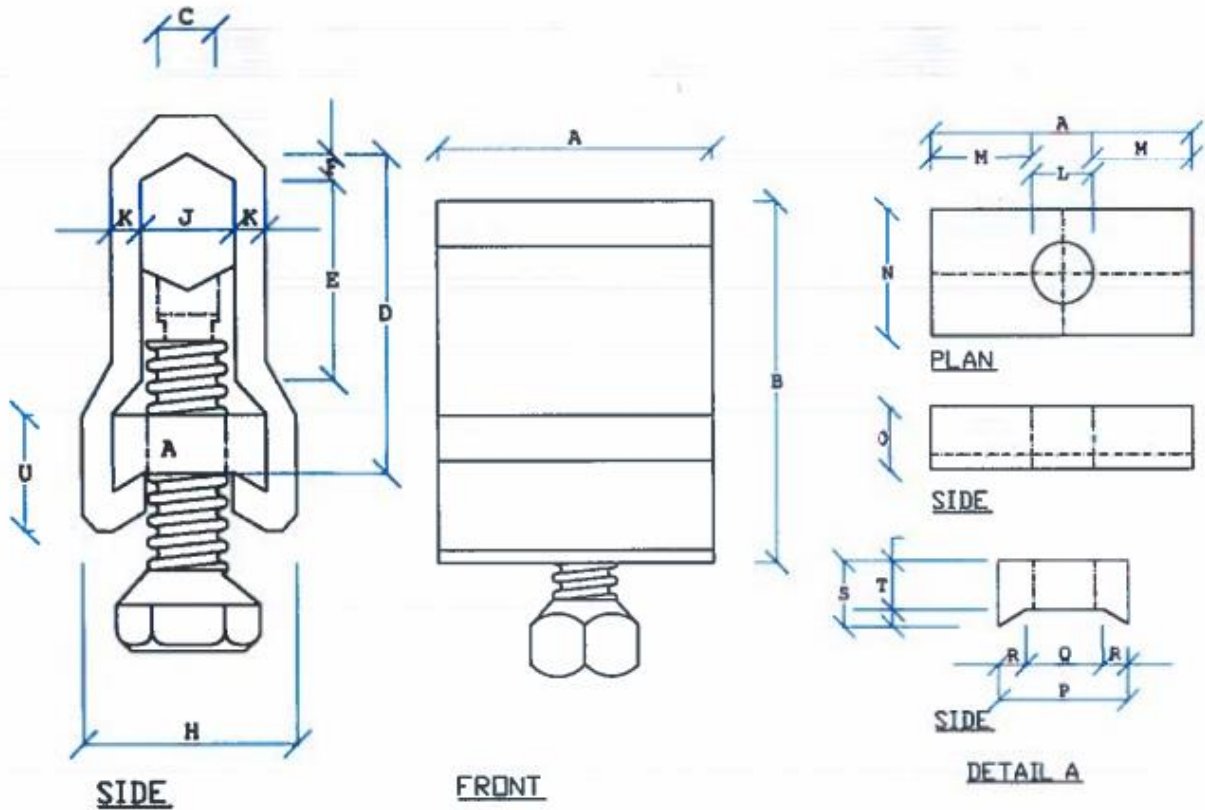


## Aluminum Line Taps (50mm<sup>2</sup> & 100mm<sup>2</sup>)

<b>ANNEX A: Guaranteed Technical Particulars and Statement of Compliance</b>		
	<b>Description</b>	<b>Bidder's Offer</b>
1.	<b>Manufacturer's name &amp; country of manufacture of item offered</b>	Metsec Cables Ltd, Kenya
2.	<b>Standard of Manufacture</b>	Aluminium line taps shall be designed, manufactured and tested in accordance with DIN 48072-1
4.	<b>Scope of use and sizes of cable applicable</b>	Aluminium connectors (line taps) shall be suitable for connecting stranded aluminium conductors of sizes 50mm <sup>2</sup> and 100mm <sup>2</sup> .
5.	<b>Electrical power rating- short circuit current, kA/s</b>	This specification is for overhead line fittings for use on overhead power lines operating at voltages up to and including 66Kv (66,000 Volts) a.c. 50Hz.
6.	<b>Material of body</b>	Line tap body shall be made of electrolytic corrosion resistant, high strength aluminium.
7	<b>Manufacture:</b>	
	a) High strength aluminium alloy	YES
	b) Designation of aluminium alloy	As per EN AW- 6082 (EN AW-AI SiMgMn)
	c) Standard of manufacture	In accordance BS EN 586-1&2
	d) Chemical composition	The line tap body will be free from porosity and imperfections, corrosion resistant.
	e) Mechanical properties	The interior surface will be smooth and free from sharp burrs or edges which could damage the conductor. The exterior surface will be smooth.
8.	<b>Bolts and nuts:</b>	
	a) Type of steel	As per ISO 898-1, ISO property class 8.8, hot dip galvanized to ISO 1461 with minimum mean coating thickness 40µm. The bolts will be supplied and provided with a thin film of oil.
	b) Corrosion resistant	Pressure pad shall be made of corrosion resistant, aluminium. The thickness of the pad will be such so it will not be twisted after tightening the bolts.
	c) Mechanical properties as per ISO 898-1 & 2	YES



**DIMENSIONS:**



LINE TAP	A	B	C	D	E	F	G	H	J	K	L	M	N	O	P	Q	R	S	T
For 50mm <sup>2</sup>	32	42	6	26	20	2.5	6	22	10	3	8	12	16	8	16	10	3	8	6
For 100mm <sup>2</sup>	48	58	9	38	25	4	8	28	15	3.5	12	18	22	12	22	12	5	12	8

1. All dimensions are in millimetres  
 2. All the values are minimum values

All of the above information, including drawings, illustrations and graphic designs, reflects our present understanding and is to the best of our knowledge and belief correct reliable. Users, however, should independently evaluate the suitability of each product for the desired application. Under no circumstances does this constitute an assurance any particular quality or performance. Such an assurance is only provided in the context of our product specifications or explicit contractual arrangements. Our liability for products set forth our standard terms and conditions of sale

