

EARTH ROD COUPLER

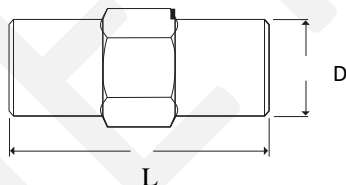
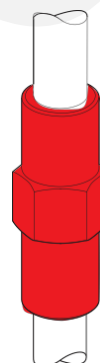


APPLICATION

These couplings are used for joining copperbond threaded earth rods together. They facilitate deep driving and ensure continual contact between the rods both during and after installation.

The coupling also protects the earth rod threads during installation with the threaded driving head. There is a lead-in for ease of assembly and a hex on the outside for grip and keeping the coupling tight when driving into the ground.

Type	L mm	D mm	Weight (kg)
1/2'	70	20	0.07
5/8'	70	20	0.09
3/4'	80	24	0.14



All of the above information, including drawings, illustrations and graphic designs, reflects our present understanding and is to the best of our knowledge and belief correct reliable. Users, however, should independently evaluate the suitability of each product for the desired application. Under no circumstances does this constitute an assurance any particular quality or performance. Such an assurance is only provided in the context of our product specifications or explicit contractual arrangements. Our liability for products set forth our standard terms and conditions of sale



Scan QR Code