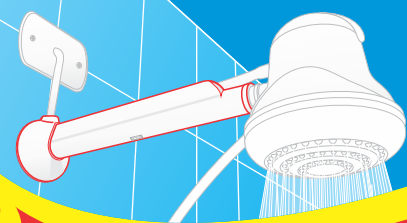


**For Showers  
installation**



- **Optimizes the hydraulic and electrical installation.**
- **Improve the look of your bathroom.**
- **Compatible with all kinds of shower.**

**Super  
Cane**  
Super Pipe

**30cm  
of lenght**

**Super  
Cane**

**Super Pipe**



**The Top resistance and quality in the category**

**RELEVANT INFORMATION:**

Preferably installed by a skilled professional.

**QUANTITY:** 1 unit

**COMPOSITION:** Thermoplastic.

**WARRANTY:** Fame guarantees this product against eventual manufacturing damages.

**VALIDITY:** "Not perishable".

**COMPLEMENTARY INFORMATION  
FOR THE PROFESSIONAL:**

1 - Turn off the electrical circuit.

2 - Use proper tools.

3 - Check the instruction manual of shower to be installed in the pipe.



**TeL:** 55 - 11 - 3478-5618  
**Fax:** 55 - 11 - 3478-5769  
**E-mail:** [exporta@fame.com.br](mailto:exporta@fame.com.br)

**Manufaturer:** FAME - Fábrica  
**de Aparelhos e Material Elétrico Ltda.**  
Rua Cajuru, 746 - Belenzinho  
Zip code 03057-900 São Paulo - Brazil  
Tax ID (CNPJ): 60.620.366/0001-95  
If you have a doubt or an opinion on our products  
please contact our customer service:



18.2909 / AL - 1014

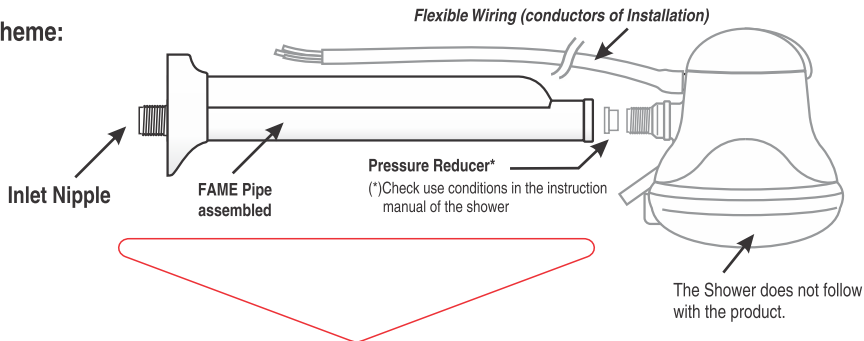
Visit us on the website at: [www.fame.com.br](http://www.fame.com.br)



# Super Cane

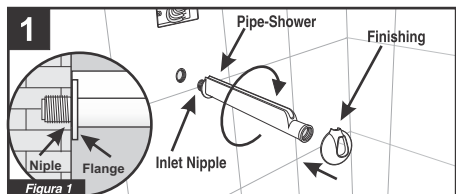
## Super Pipe For Showers installation

### Assembling Scheme:



### Pipe Installation Scheme:

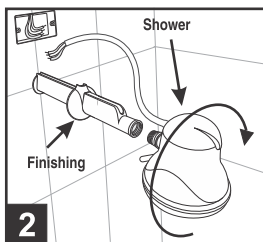
The electrical and hydraulic installation of the shower must be in accordance with its respective instruction manual.



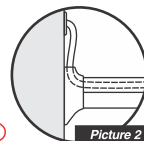
Clean the water outlet pipe where the PIPE-SHOWER will be installed to eliminate residues.

Apply Teflon tape on the entrance nipple, screw the pipe only with the hands and place the finishing in the pipe.

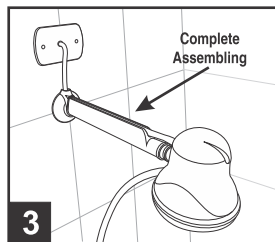
Note: The Flange connection must be fully in the wall (picture 1).



Screw the shower in the pipe according to its instruction manual.



**Picture 2:**  
Place the flexible wiring of shower between the pipe and the finishing.



Use the slot in the pipe to fit the flexible wiring of the shower through its finishing (picture 2). Complete the shower installation according to its instruction manual.

Do not use chemical products in the cleanliness of the Super chromed Pipe.  
Only neutral detergent or burnishes products.