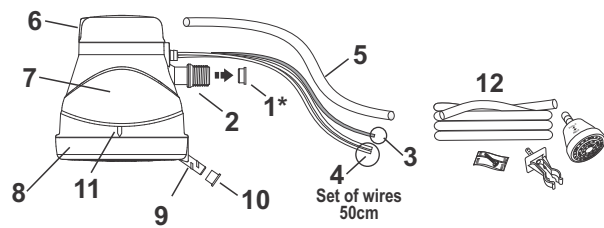
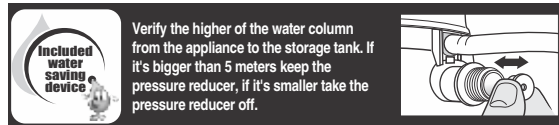


Description



- 1* Water economizer "Pressure Reducer" (verify the recommendations below).
 (*) Keep the pressure reducer on whenever the water pressure is higher than 5 meters (50 kPa).
 (*) Take the pressure reducer out whenever the water pressure goes from 1,3 to 5 meters (13 to 50 kPa / 1,8 psi).

2. Water inlet nipple (1/2" gas thread)
3. Yellow-green wire (grounding)
4. White wire (phase) and blue wire (neutral) electrical circuit
5. Electrical conductors finishing
6. Temperature selector: WARM (II) - COLD/OFF (I) - HOT (III)
7. Heating chamber
8. Spray plate
9. Outlet pipe for hand shower
9. Cover of water outlet pipe
10. Mark to fit the spray plate
11. Hand shower, holder and hose



Check if the exclusive independent electric circuit that will provide energy to the Super Ducha 3T has the necessary minimum section, as shown in the table below.

Electrical Requirements

Equipment content	Volts (V)	Nominal power HOT Watts - W	Nominal power WARM Watts - W	Minimum wire section (mm ² /AWG)	Circuit breaker (ampères)	Maximum distance from circuit breaker (m)*
Check the product specifications on the package	127	3000	2000	4,0/10	32	19
	127	4800	3000	6,0/8	40	18
	127	5200	3400	10,0/6	50	28
	220	3000	2000	2,5/12	20	34
	220	4800	3000	4,0/10	32	36
	220	5400	3400	4,0/10	32	32

Tips:

- Keep this package with the instructions for further views.

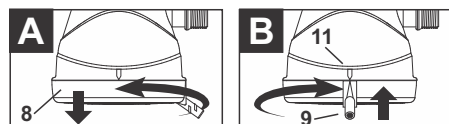
- At warm position the energy saving is about 49%.

- The electrical shower is the most economical way to have a good and hot shower. Saving water and electrical energy.

- Make a good use of your New Super Ducha 3T by setting the electrical and hydraulic installations in a correct way, ensuring a higher durability.

Spray plate remotion to clean:

- 1 - Turn off the electrical circuit.
- 2 - Whenever the water flow of New Super Ducha 3T were irregular, unscrew the spray plate twisting by hand counter-clockwise using the outlet pipe (9) it is easy to remove, take the spray plate off and clean it inside using a small brush.
- 3 - The spray plate will come out with water.
- 4 - After cleaning reinstall the spray plate, align the mark of chamber (11) with the outlet pipe (9) to fit and twist clockwise.
- 5 - Before turning on the electrical circuit let the water flow for some seconds to avoid damage to the resistance.



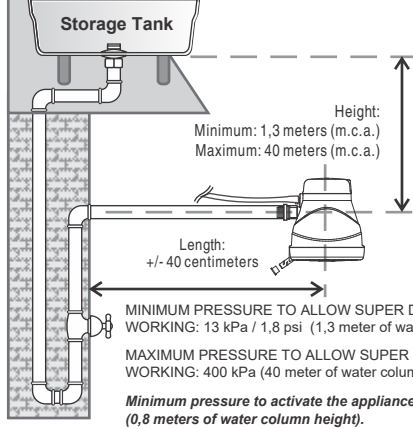
Warranty:

FAME LTDA. guarantees this product against eventual manufacturing damages for a period of 1 year to the appliance and 90 days to the resistance due to the different kinds of water supplying, taking into account the date of the invoicing.

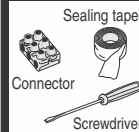
Not included in the Warranty:

- 1) Damage in the product as consequence of the accidents, bad use or handling, incorrect use, also for violation signs, inadequate purposes unless those indicated for FAME LTDA.
- 2) If the eventual damage has been occurred for the customer or another person not qualified for FAME LTDA.
- 3) If the electrical installation of the product be connected in a different voltage as specified in the manual instruction.
- 4) If not use the connector part to join the wiring system.
- 5) Turn on the shower in the first operation placing the Hot or Warm temperature selection.

FAME New Super Ducha 3T



The picture is not on a scale basis.



*Needed material:

- Connector
- Sealing tape
- Screwdriver

* These materials doesn't come with the New Super Ducha 3T.



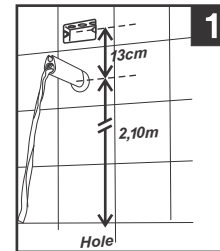
Never make use off plugs or outlets.

On phase + neutral circuits, the white wire should be connected to the phase and the blue to the neutral. On phase + phase there is not this distinction.

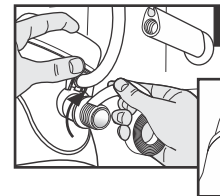
The water resistivity at the temperature of 15°C must not be less than 1300Ω.cm. Level of protection IP24.

The electrical shower must be connected to an exclusive and independent circuit.

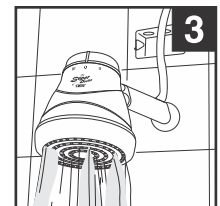
Hydraulic installation



1

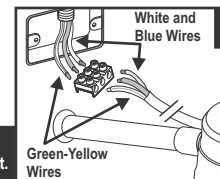


2



3

Electric installation



4

The plate and connector does not come with product.

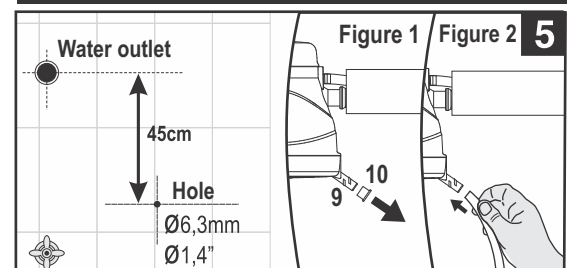


Important for your safety:

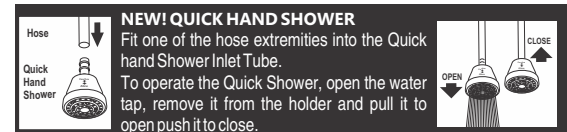
Do not forget to connect on the grounding wire. If the circuit does not include a grounding system please contact a technician.

Do not use Neutral wire as grounding.

Hand shower installation



5



If you prefer not to install the hand shower and hose, please keep the cover (10) in the outlet pipe (9). Otherwise, install the support and the hand shower at about 45 cm under the hydraulic connection by using drill of Ø 6,3mm or Ø 1/4", be aware not to perforating the hydraulic pipe. Remove the cover of water outlet pipe (9) (Figure 1) and connect the hose with the hand shower (Figure 2). Now turn on the electrical circuit and use your New Super Ducha 3T normally. Always change the temperature with the water-tap closed.

Use Instructions

- 1) When changing the position of temperature selector always close the water-tap.
- 2) The appliance must be cleaned externally by using humid cloth without abrasive products. When the spray plate flow is irregular it must be removed and cleaned with a brushing.
- 3) Children, elderly people, sick or physically / mentally weakened must be supervised when using the appliance.
- 4) Do not use the equipment if the water is frozen.

Problems and Possible Solutions

PROBLEMS	POSSIBLE REASONS	SOLUTIONS
Super Ducha Doesn't Start	Low water pressure.	Minimum pressure 0,8 m.c.a. Remove pressure reducer.
	Switch is OFF.	Switch it ON.
	Fuse is burnt.	Change the fuse.
Super Ducha Heats Less	Temperature selector is on "switch off" position (I).	Select "Warm" (II) or "Hot" (III) position.
	Temperature of inlet water too cold.	Select "Hot" (III) position; Reduce the water pressure through the tap.
Super Ducha Heats Much	Heating Element not suitable for the climate.	Change the Element into a bigger one
	Temperature of inlet water too hot.	Select "Warm" position (II). Increase the water pressure through the tap.
Super Ducha Heats Much	Heating Element not suitable for the climate.	Change the Element into a smaller one or switch off Super Ducha.