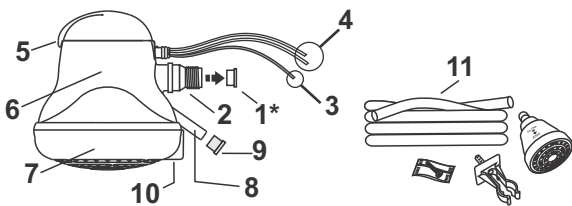


## Product Description

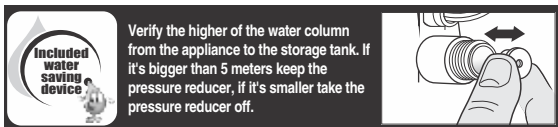


### 1\* - Water economizer "Pressure Reducer" (verify the recommendations below).

(\*) Keep the pressure reducer on whenever the water pressure is higher than 5 meters (50 kPa).

(\*) Take the pressure reducer out whenever the water pressure goes from 1,3 to 5 meters (13 to 50 kPa / 1,8 psi).

2. Water inlet nipple (1/2" gas thread).
3. Yellow-green wire (grounding).
4. White wire (phase) and blue wire (neutral) electrical circuit.
5. Temperature selector: ( 0 ) Cold - ( II ) Warm - ( III ) Hot - ( IIII ) Super hot.
6. Heating chamber.
7. Spray plate.
8. Outlet pipe for hand shower.
9. Cover of water outlet pipe.
10. Mark for spray plate remotion.
11. Hand shower holder, hand shower and hose.



Check if the exclusive independent electric circuit that will provide energy to the Super Ducha 4 has the necessary minimum section, as shown in the table below.

## Electrical Requirements

Equipment content	Volts (V)	Economical Power (Watts) (POSITION 2) Warm	Medium Power (Watts) (POSITION 3) Hot	Nominal Power (Watts) (POSITION 4) Super hot	Minimum wire section (mm <sup>2</sup> /AWG)	Circuit breaker (Amperes) NEMA / IEC	Maximum distance from Circuit breaker (m)*
Check the product specification on the package	110	1.150	2.000	3.150	4/10	30/32	15
	127	1.200	2.000	3.200	4/10	30/32	18
	127	2.000	3.400	5.400	10/6	50	26
	220	1.200	2.000	3.200	2,5/12	20	32
	220	2.300	3.700	6.000	4/10	30/32	29

(\* ) For larger distances, contact a technician. When happens variation in the tension (voltage) it will also happen variation in the temperature of the water.

## Use Instructions

- 1) When changing the position of temperature selector always close the water-tap.
- 2) The appliance must be cleaned externally by using humid cloth without abrasive products. When the spray plate flow is irregular it must be removed and cleaned with a brushing.
- 3) Children, elderly people, sick or physically / mentally weakened must be supervised when using the appliance.
- 4) Do not use the equipment if the water is frozen.

## Tips:

- Keep this package with the instructions for further views.
- **At warm position the energy saving is about 60%.**
- The electrical shower is still the most economical way to have a good and hot shower. Saving water and electrical energy
- Make a good use of your Super Ducha 4 by setting the electrical and hydraulic installations in a correct way, ensuring a higher durability.

## Spray plate remotion to clean:

- 1 - Turn off the electrical circuit
- 2 - Turned it with your hands in the anti-clockwise direction using the mark for the Spray Plate (10) to ease the removal.
- 3 - The intermediary base with water will be removed with the spray plate.
- 4 - After cleaning reinstall the spray plate and the intermediary base, by setting the grounding wire inside the intermediary base column.
- 5 - Before turning on the electrical circuit let the water flow for some seconds to avoid damage to the resistance.

## Warranty:

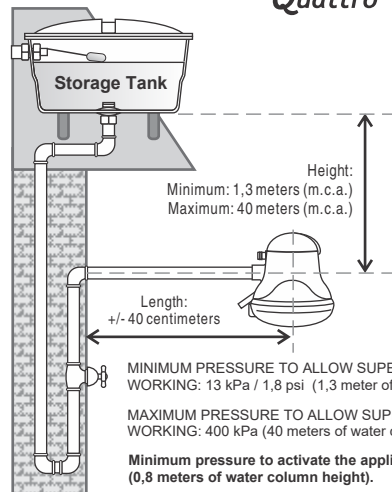
FAME LTDA. guarantees this product against eventual manufacturing damages for a period of 1 year to the appliance and 90 days to the resistance due to the different kinds of water supplying, taking into account the date of the invoicing.

### Is not included in the Warranty:

- 1) Damage in the product as consequence of the accidents, bad use or handling, incorrect use, also for violation signs, inadequate purposes unless those indicated for FAME LTDA.
- 2) If the eventual damage has been occurred for the customer or another person not qualified for FAME LTDA.
- 3) If the electrical installation of the product be connected in a different voltage as specified in the manual instruction.

AL - 1120

# FAME Super Ducha Quattro



The picture is not on a scale basis.



### \*Needed material:

- Connector
- Sealing tape
- Screwdriver

\* These materials doesn't come with the Super Ducha 4



-Before carrying out any work ensure that the **electricity supply is turned off**. The tension (voltage) of the circuit is the same of the appliance and if the wire section and the circuit breaker are in accordance with the table below.

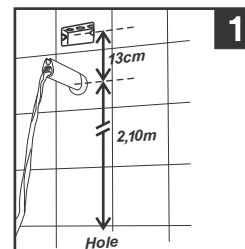
### Never make use off plugs or outlets.

On phase + neutral circuits, the white wire should be connected to the phase and the blue to the neutral. On phase + phase there is not this distinction.

The water resistivity at the temperature of 15°C must not be less than 1300Ω.cm. Level of protection IP24.

**An electrical shower must be connected to an exclusive and independent circuit.**

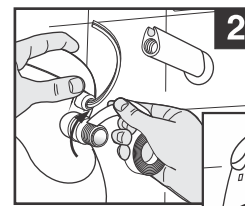
## Hydraulic installation



**1** Clean up the water outlet pipe to eliminate any residues.

Open the water-tap and let the water flow in order to eliminate the residues. Check the hydraulic connection diameter which must be 1/2" or use an adapter.

Super Ducha 4 must be preferably installed at a height of 2.10 meters from the floor to the water pipe outlet. In this way the water will not get cool during the flow.



**2** Apply Sealing Tape on the inlet nipple.

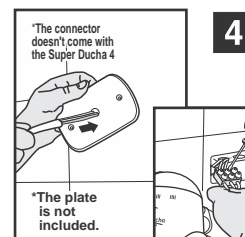
Check if the temperature selector is in the position (0) (Cold) as displayed.



**3** Screw the Super Ducha 4 in the pipe using only the hands.

Open the water-tap and let the water flow for some seconds as displayed. This operation aims to fill the heating chamber to avoid damage to resistance and checking if there is leakage.

## Electric installation



\*The connector doesn't come with the Super Ducha 4

\*The plate is not included.

**4**

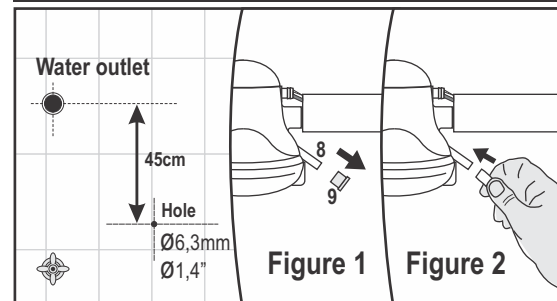
Pass the assembling (Wirings + Grounding) of the Super Ducha 4 through the plate (if so). Connect the wirings, using the connectors which must be very tight and place inside the electric box. Close the electric box with the plate if there is and screwed.

## Important for your safety:

Do not forget to connect on the grounding wire. If the circuit does not include a grounding system please contact a technician.

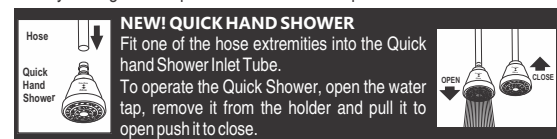
**Do not use Neutral wire as grounding.**

## Hand shower installation



If you prefer not to install the hand shower and hose, please keep the cover (9) in the outlet pipe (8). Otherwise, install the support and the hand shower at about 45 cm under the hydraulic connection by using drill of Ø 6.3mm or Ø 1/4", be aware not to perforating the hydraulic pipe. Remove the cover of water outlet pipe (9) (Figure 1) and connect the hose with the hand shower (Figure 2).

Now turn on the electrical circuit and use your Super Ducha 4 normally. Always change the temperature with the water-tap closed.



## Problems and possible solutions

PROBLEM	POSSIBLE REASON	SOLUTION
SUPER DUCHA 4 Doesn't Start	Low water pressure	Minimum pressure 8 kPa. Remove pressure reducer.
	Switch is OFF.	Switch it ON.
	Fuse is burnt.	Replace the fuse.
	Temperature selector is on ( 0 ) Cold position.	Select the II (Warm), III (Hot) or IIII (Super hot) position.
SUPER DUCHA 4 Heats Less	High volumen of water, room temperature lower than 10°C.	Select IIII, Very Hot Position. Reduce the water pressure through the tap
SUPER DUCHA 4 Heats Much	Low volumen of water, room temperature higher than 25°C.	Select II, Warm Position. Increase the water pressure through the tap