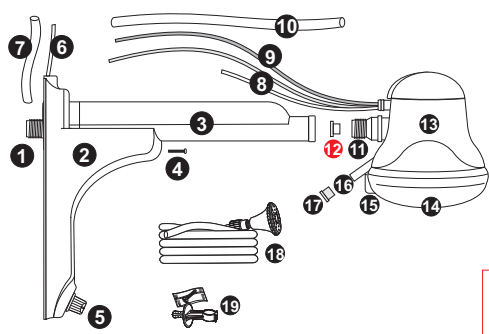


Product Description



- 1 - Pipe inlet nipple (1/2 Gas thread).
- 2 - Support for the pipe.
- 3 - Pipe (30 cm).
- 4 - Fixing screw for the Support.
- 5 - Electronic temperature control:
- 0 (off) variation until maximum power.
- 6 - Flexible wire (electrical circuit).
- 7 - Electrical conductors finishing (12 cm).
- 8 - Wires (electrical circuit).
- 9 - Yellow-green wire (grounding).
- 10 - Electrical conductors finishing (30 cm).
- 11 - Water inlet nipple (1/2 Gas thread).
- 12 - Water economizer "Pressure Reducer" (verify the recommendations below)

(*) Keep the pressure reducer on whenever the water pressure is higher than 5 meters (50 kPa).

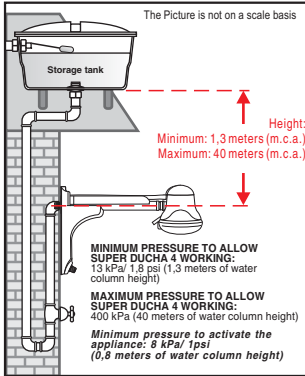
(*) Take the pressure reducer out whenever the water pressure goes from 1,3 to 5 meters (13 to 50 kPa/ 1,8 psi).

- 13 - Heating chamber.
- 14 - Spray plate.
- 15 - Mark for spray plate removal.
- 16 - Outlet pipe for hand shower.
- 17 - Cover of water outlet pipe.
- 18 - Hand shower and hose.
- 19 - Hand shower holder.



Verify the height of the water column from the appliance to the storage tank. If it's greater than 5 meters keep the pressure reducer, if it's smaller take the pressure reducer off.

Technical features



Check if the exclusive independent electric circuit that will provide energy to the SHIELDED ELECTRONIC SUPER DUCHA has the necessary minimum section, as shown in the table below.

Equipment content	Volts (V)	Nominal power (Watts)	Minimum wire section (mm)	Circuit breaker (Amperes)	Maximum distance from the circuit breaker (m)*
Check the product specification on the package	127	3500	4,0	30	14,1
	220	3500	2,5	20	24,4

(*) For larger distances, contact a technician.

When happens variation in the tension (voltage) it will also happen variation in the temperature of the water.

Installation This product should be installed by a technician.



- Before carrying out any work ensure that the electricity supply is turned off. The tension (voltage) of the circuit is the same of the appliance and if the wire section and the circuit breaker are in accordance with the tag with the product features next to the bar code.

- To connect the appliance wires to the electrical circuit, use a FAME connector or a brand of your choice.

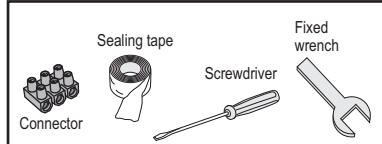
- Never use plugs or outlets.

- On phase +neutral circuits, the phase wire should be connected to the phase and the neutral to the neutral. On phase+ phase there is not this distinction.

- Use a bipolar circuit breaker for bipolar circuits of 220 volts (F+F).

- The water resistivity at the temperature of 15° C must not be less than 1300 Ω cm. Level of protection IP-24.

- The electrical installation of FAME's Shielded Electronic Super Ducha must be done in an exclusive and independent circuit.



- Needed material:**
- Connector
 - Sealing tape
 - Screwdriver
 - Fixed wrench

These materials do not come with the product.

Before starting the hydraulic installation

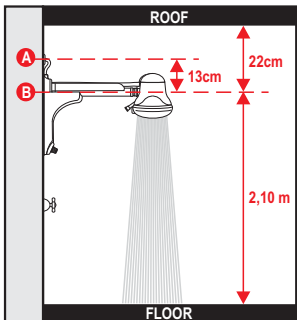


- Clean up the water outlet pipe (C) to remove any residue.
- Ensure that the electrical circuit is turned off.
- Open the water-tap and let water flow to eliminate the residues.
- Check if the hydraulic connection diameter is 1/2" or use an adapter.

The Shielded Electronic Super Ducha must be preferably installed at a height of 2.10 meters from the floor to the water pipe outlet. In this way the water will not get cool during the flow.

Before installing, check which option (A or B) is more suitable for the place where your SHIELDED ELECTRONIC SUPER DUCHA will be installed.

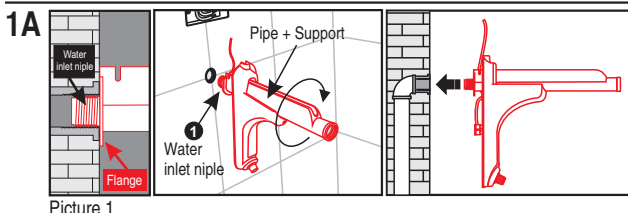
OPTION A



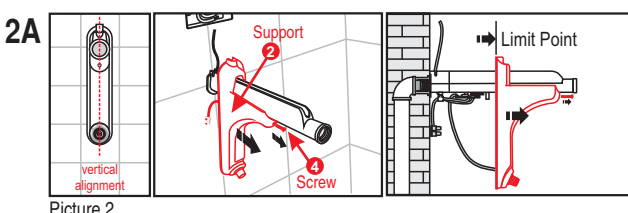
If the distance between the hidraulic connection and the roof is 22cm or above, there is enough space to screw the setting pipe + support in the hidraulic connection. It is not necessary to separate the setting pipe + support.

- A = Electric Connection
- B = Hidraulic Connection

Preparing for the Hydraulic installation - Option A



Apply sealing tape on the inlet nipple (1), screw it together with the Support using only your hands, until the flange is close to the wall (Picture 1)



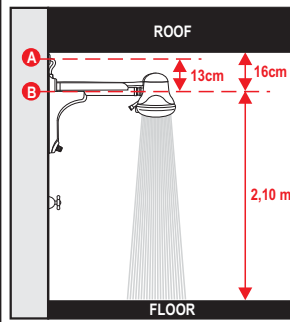
Before proceeding this step, ensure that the Support is aligned to the wall in a vertical position (Picture 2).

With a screwdriver loose the screw of the Support (4), move the screw on the pipe to the point shown in the picture this will enable the access to the wires during the electrical installation.

The Shielded Electronic Super Ducha must be preferably installed at a height of 2.10 meters from the floor to the water pipe outlet. In this way the water will not get cool during the flow.

Before installing, check which option (A or B) is more suitable for the place where your SHIELDED ELECTRONIC SUPER DUCHA will be installed:

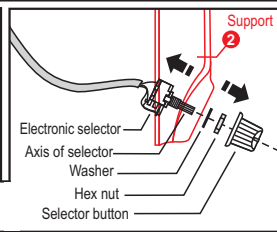
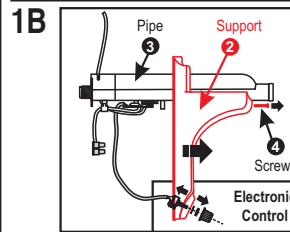
OPTION B:



If the distance between the hidraulic connection and the roof is below 22cm, there isn't enough space to screw the setting pipe + support in the hidraulic connection. It is necessary to separate the setting pipe + support.

- A = Electric Connection
- B = Hidraulic Connection

Preparing for the Hydraulic installation - Option B



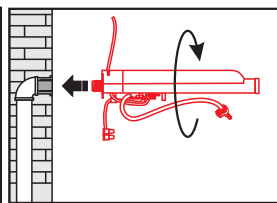
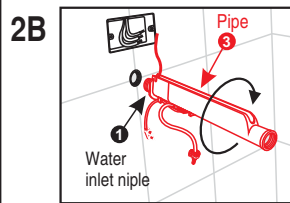
To separate the pipe from the Support proceed as follow:

With a screddriver unscrew the Fixing screw (4) from the Support (2) and then from the pipe (3).

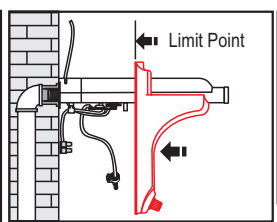
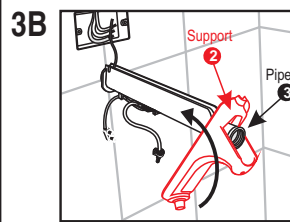
Separate the electronic temperature control from the Support:

- 1 - Put the temperature selector in position (0) and pull it to remove from the selector axis.
- 2 - With a Fixed wrench (10 mm) loose the hex nut.
- 3 - Remove the washer.

Obs: keep these components in a safe place not to loose them.

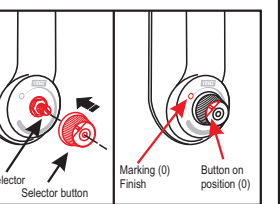
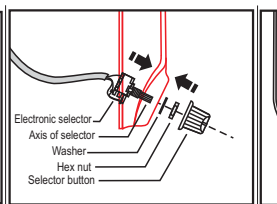
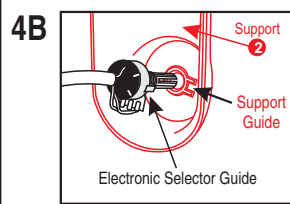


Apply sealing tape in the inlet nipple (1), screw the pipe using only your hands, ensure that the flange is close to the wall (picture 1).



Pass the Support through the pipe to the point shown in the Picture in order to facilitate the access to the wires during the electrical installation.

Before proceeding this step, ensure that the Support is aligned to the wall in a vertical position (Picture 2).



Insert the Electronic Selector in the Support's hole following the guides to ensure that the Selector is installed in the correct position.

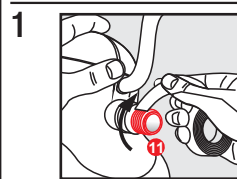
Observe the correct sequency of the assembly:

- 1 - Insert the Electronic Selector;
- 2 - Insert the washer on axis;
- 3 - Tight the hex nut on the Electronic Selector using a Fixed wrench (10 mm);
- 4 - Put back the Selector button on it.

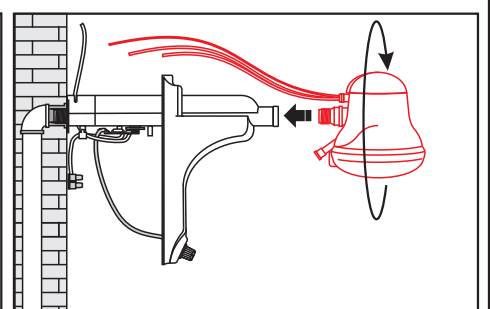
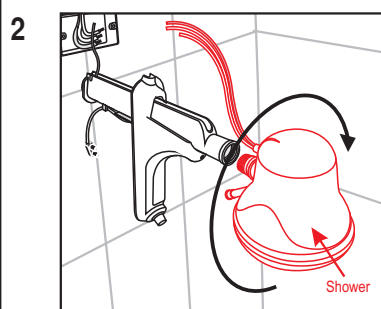
To Put back the Selector button on the Selector, align it to zero (0) and gently press it.

Hydraulic Installation

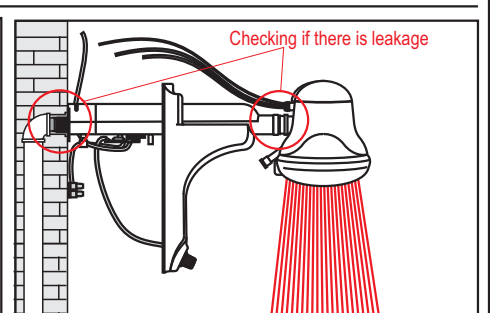
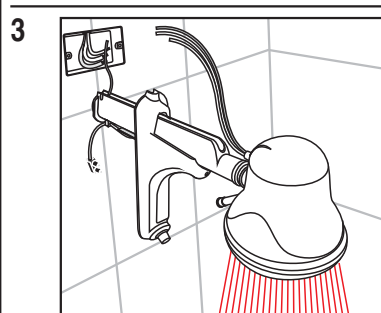
After preparing for the hydraulic installation according to Options 1 or 2, having proceed to the hydraulic installation as follow:



Apply sealing tape on the inlet nipple (11).



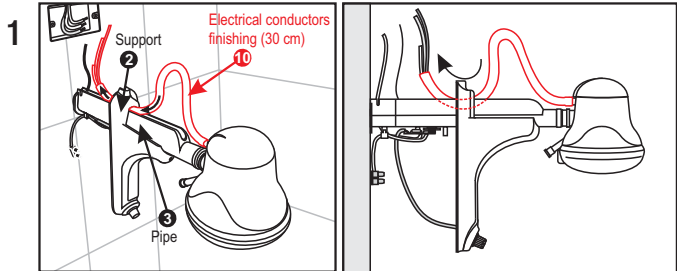
Screw the SHIELDED ELECTRONIC SUPER DUCHA using only your hands.



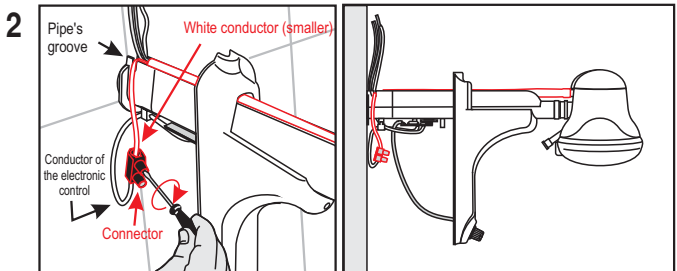
Open the water tap and let the water flow for some seconds. This operations aims to fill the heating chamber to avoid damage to resistance and checking if there is leakage.

If there is a leakage, fix it before proceeding with the installation.

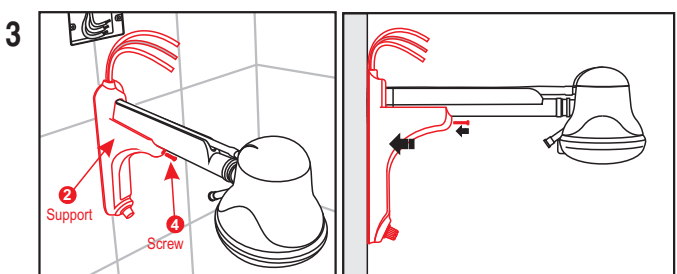
Electrical installation



Pass the 30 cm - Electrical conductor finishing (10) through the electrical conductors. Then pass the set in the pipe's groove (3) through the upper opening of the Support (2).



Before installing the electrical connections, place correctly the conductor finishings (10) along the pipe's groove, then insert, the **white conductor (smaller)** in the pipe's inlet, ensure it is very tight. Connect this white flexible wire into the **connector** of the electronic control and tight it very well with a screwdriver.



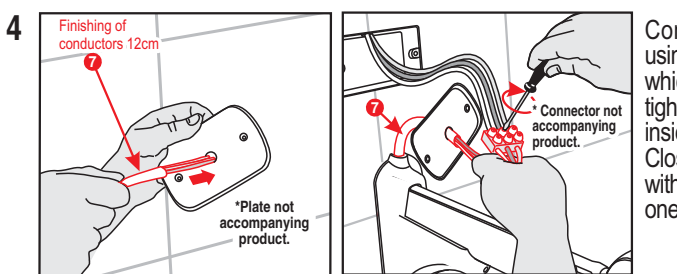
Ensure there is no flexible wires compromising the Support's wires in the wall (2), keep them inside the Support.

Tighten very well the screw of the Support in the wall.

See also: Adjustment of the finishing.

Adjustment of the finishing

The screw (4) enables to fix both pieces and to regulate the Support in the wall (2), depending on the conditions of the pipe (3) was installed.



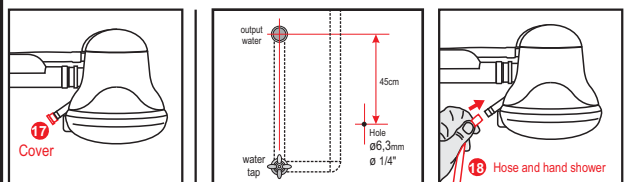
Place the Electrical conductors finishing (12cm) (7) and as displayed pass the assembling (wirings+grounding) of the Super Ducha through the plate (if so).

Important for your safety:

Do not forget to connect on the grounding wire. If the circuit does not include a grounding wire hire a technician. **Do not use Neutral wire as grounding.**

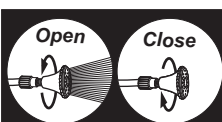
Now turn on the electrical circuit and you enjoy your SHIELDED ELECTRONIC SUPER DUCHA.

Installing the hose and the hand shower



If you prefer not to install the hand shower and hose, please keep the cover (17) in the outlet pipe (16).

To install the SHIELDED ELECTRONIC SUPER DUCHA with the hose, install the support and the hand shower at about 45 cm under the hydraulic connection by using drill of 0 6,3mm or 0 1/4", be aware not to perforate the hydraulic pipe. Remove the cover (17) of water outlet pipe (16) and connect the hose with the hand shower (18).

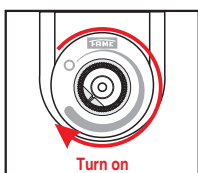


To use the hand shower, remove it from the support (19), open the water tap and throw it.

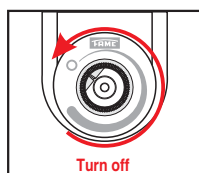
The hand shower is opened by turning it anti-clockwise and closes by turning it clockwise.

Instructions for Use

Every time you use your SHIELDED ELECTRONIC SUPER DUCHA, let the water flow for some seconds in order to turn on the resistance which distinctive noise indicates it is working.



To turn on or change the water temperature turn the temperature control clockwise until you hear a "click", keep turning until you reach desirable temperature.



To reduce the temperature turn the temperature control anti-clockwise until you hear a "click". Turn off the electronic temperature control to save energy in hot days.

- When the water tap is closed, the resistance is turned off but the ELECTRONIC SUPER DUCHA is still turned on.

- Never use plugs and/or outlets in the electrical connection of the appliance.

- Ensure that SHIELDED ELECTRONIC SUPER DUCHA grounding wire is properly connected to an efficient grounding system.

The complete switching off of this appliance from the electrical supply must be done through an exclusive circuit breaker suitable to the tension (voltage) of this product.

Other specifications:

1) The replacement of electrical connectors should only be done at a FAME's authorized store, except the resistance.

2) For your safety, the water outlets of this appliance should not be connected to any other appliance.

3) This appliance is equipped with an shielded element which accumulates hot water even after it is turned off. It is advisable to let cold water flow for some seconds (turning the temperature control to OFF position) after you finish your shower.

4) This appliance may heat the water to a temperature that can cause burns. To avoid any accidents, regulate properly the temperature of the water before your shower and supervise children, elderly people, sick or physically/mentally weakened when using it.

Tips:

- Keep this package with the instructions for further views.
- Make a good use of your SHIELDED ELECTRONIC SUPER DUCHA by setting the electrical and hydraulic installations in a correct way, ensuring a higher durability.

Relevant information:

- This appliance must be cleaned externally by using a wet cloth without abrasive products.
- This appliance should be installed by a technician.
- This appliance do not present any risks to the consumer if installed properly.
- The water resistivity at the temperature of 15°C must not be less than 1300 Ω cm.

- Protection Level IP-24

CHARACTERISTICS AND QUALITY:

In accordance with regulation 002 - AAQ - INMETRO.

COMPONENTS:

Thermoplastic insulator and switching elements in silver and copper alloy.

OPERATION:

1,3 to 40 meters of water column height (13 to 400 kPa).

Problems and possible solutions

If the appliance does not work after its installation, refer to the following table:

PROBLEMS	POSSIBLE REASON	SOLUTION
The ELECTRONIC SUPER DUCHA doesn't start	Low water pressure.	Minimum pressure 8 kPa. Remove pressure reducer.
	Switch is OFF.	Switch it ON.
	Fuse is burnt.	Replace the fuse.
	Temperature selector in on 0 (cold) position.	Turn the Selector clockwise until you hear a "click".
	Switch DR is OFF.	Check the connection of the Switches: white wire should be connected to the phase and the blue to the neutral.
The ELECTRONIC SUPER DUCHA heats less	High volume of water, room temperature lower than 10°C	Place the selector on the higher temperature. Reduce the water pressure through the tap.
The ELECTRONIC SUPER DUCHA heats much	Low volume of water, room temperature lower than 25°C	Place the selector on the lower temperature. Increase the water pressure through the tap.

Warranty:

FAME LTDA guarantees this product against eventual manufacturing damages for a period of 1 year and 90 days to the resistance due to the different kinds of water supplying, taking into account the date of the invoicing.

It is not included in the Warranty:

1) Damages in the product as consequence of the accidents, bad or incorrectly use or handling, also for violation signs, and inadequate purposes unless those suggested by FAME LTDA.

2) If the damage was caused by the customer or another person not qualified by FAME LTDA or the appliance was fixed by a person not authorized by FAME LTDA.

3) If the electrical installation of the product is connected to a voltage different from the one specified in the Instructions of Installation and Use.



FAME - Manufacturer of Showers and Electric Material

Cajuru Street, 746 - Belenzinho
ZIP CODE: 03057-900
Phone: +55 11 3478-5618
Fax: +55 11 3478-5660
www.fame.com.br