

Eaton 5SC UPS

500/750/1000/1500/2200/3000VA



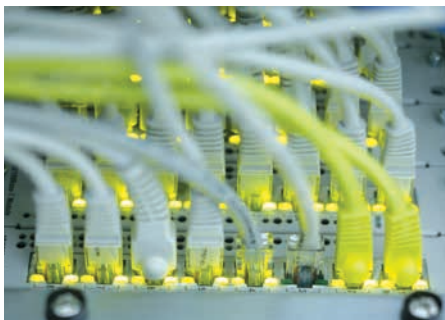
5SC is available in convenient compact form factors



Short depth format for easy integration in small cabinets

Ideal for protecting:

- Rack or Tower servers
- NAS, Network equipments
- ATMs, Ticket machines, Kiosks



Affordable protection for servers and networking systems

Manageability

- The LCD interface provides clear status of the UPS key parameters such as input and output voltage, load and battery level, and estimated runtime. Essential configuration capabilities are also offered for output voltage, audible alarm and sensitivity.
- The 5SC offers USB and serial connectivity. USB port is HID compliant for automatic integration into Windows, Mac OS and Linux.
- A slot for an optional communication card (including SNMP/ Web card or relay contact card) is available on rack and R/T models. Eaton's Intelligent Power® Software Suite insures compatibility with all major OS including virtualization software.

Reliability

- Pure sinewave output: When operating in battery mode the 5SC provides a high quality output signal for any sensitive equipment connected, such as active PFC (power factor corrected) servers.
- Buck and Boost operation corrects a wide range of input voltage variations through continuous regulation, without the use of batteries.
- Stronger, longer battery life: Eaton ABM® battery management technology uses an innovative three-stage charging system that extends battery life by up to 50%.

Flexibility

- Rack models are designed to fit into short depth wall enclosures down to 500mm, 2 post racks or to be wall mounted.
- R/T models authorizes either tower or rack installation - pedestals and rail kits are included with all models at no extra charge.
- Tower models small size for easy integration even with space constraints (kiosks, cash machines, ticket machines etc.) and up to nine outlets for better flexibility!
- Easy battery replacement from front panel to extend UPS life.

EATON

Powering Business Worldwide

Eaton 5SC

500/750/1000/1500/2200/3000VA

- 1 LCD interface
- 2 Panel for batteries replacement
- 3 USB port + Serial port



- 4 8 IEC 10A (+1 IEC 16A Socket for 2200/3000VA models)
- 5 Communication card slot (Rack and R/T models only)
- 6 ROO/RPO terminal (Rack and R/T models only)

5SC 1500 Rack

Technical specifications	500	750	1000	1500	2200	3000
Rating (VA/W)	500VA/350W	750VA/525W	1000VA/700W	1500VA/1050W	2200VA/1980W	3000VA/2700W
Format	Tower	Tower	Tower or Rack 2U	Tower or Rack 2U	R/T 2U	R/T 2U
Electrical characteristics						
Technology	Line interactive High Frequency (Sinewave, Booster, Fader)					
Input voltage range without using batteries	184 to 276 V					
Output voltage and frequency	230V (-10/+6 %) (Adjustable to 220/230/240 V), 50/60 Hz ± 1Hz (Autosensing)					
Connections						
Input	1 IEC C14 (10A)		1 IEC C20 (16A)			
Outputs for Tower models	4 IEC C13 (10A)	6 IEC C13 (10A)	8 IEC C13 (10A)			
Outputs for Rack or R/T models				8 IEC C13 (10A)	8 IEC C13 (10A) + 1 IEC C19 (16A)	
Batteries						
Typical backup times @50 and 70% load*	13/9	13/9	12/8	13/8	7/4	10/6
Battery management	ABM, automatic battery test, deep discharge protection					
Communication						
Communication ports	1 USB port + RS232 serial port (USB and RS232 cannot be used simultaneously) ROO/RPO + card slot (Rack and R/T models) for Network-MS card or Relay-MS card					
Operating conditions, standards and approvals						
Operating temperature	0 to 35°C (tower models), 0 to 40°C (Rack and R/T models)					
Noise level	<40dB (tower models), <45dB (Rack and R/T models)					
Safety	IEC/EN 62040-1, UL1778					
EMC	IEC/EN 62040-2					
Approvals	CE /CB report (TUV), cTUVus					
Dimensions H x W x D in mm/ Weight						
Dimensions for Tower models	210 x 150 x 240 mm	210 x 150 x 340 mm	210 x 150 x 340 mm	210 x 150 x 410 mm		
Dimensions for Rack and R/T models				86.2 x 440 x 405 mm	86.2 x 440 x 405 mm	86.2 x 441 x 522 mm
Weight for Tower models	6.6kg	10.4kg	11.1kg	15.2kg		
Weight for Rack and R/T models				15kg	17.8kg	26.5kg
Customer service and support						
Warranty	2 years					
* Runtimes are shown @ 0.7 power factor. Backup duration is approximate and may vary with equipment, configuration, battery age, temperature, etc.						
Parts numbers*						
5SC Tower models	5SC500i	5SC750i	5SC1000i	5SC1500i		
5SC Rack and R/T models				5SC1000IR	5SC1500IR	5SC2200IRT

In the interests of continuous product improvement all specifications are subject to change without notice.