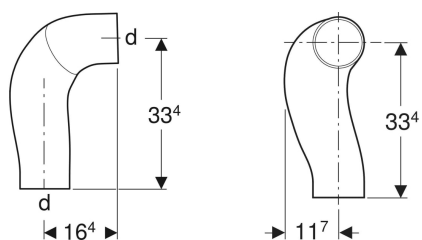


## Geberit HDPE BackFlip bend



Example image



### Application purposes

- For building drainage
- For buildings with more than five floors (high-rise buildings)
- For use with Geberit HDPE Sovent fitting d110

### Characteristics

- Can be welded on both sides with electrofusion coupling

- UV-resistant
- With SuperTube technology

### Technical data

|                        |        |
|------------------------|--------|
| Maximum discharge rate | 12 l/s |
| Product material       | PE-HD  |

| Art. no.     | Colour / surface | DN  | d, ø   | arc  |
|--------------|------------------|-----|--------|------|
| 367.616.16.1 | black            | 100 | 110 mm | 90 ° |