

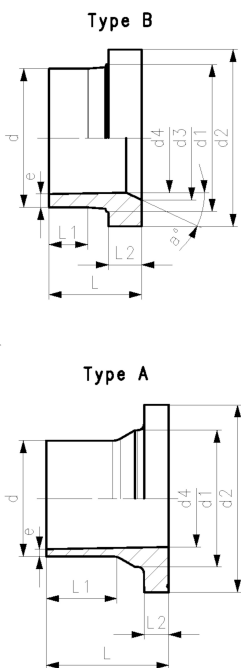


ecoFIT Flange adaptor PE100
d20-800mm / SDR11 / Combined jointing face: flat and serrated

Model:

- For IR, buttfusion welding according to DVS 2207
- Type A: without chamfer
- Type B: with chamfer
- Suitable for plastic butterfly valves type **567/578/565** up to DN250. ecoFit adapter SDR11 required for DN350 and above
- Suitable for metal butterfly valves type **038/039/044/065** up to DN250. ecoFit adapter SDR11 is required for DN350 and above
- Profile seal: d20-d800 NBR, EPDM, FKM
- Flat gasket: d20-d315 EPDM, FKM
- Pressure rating: 16 bar
- Please refer to the Online Tool: Perfect Flange Connection - GF Piping Systems (gfps.com)

* Machined

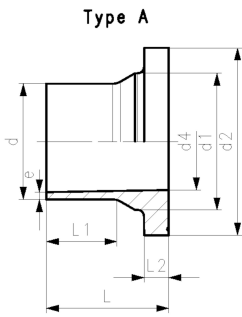


d (mm)	DN (mm)	PN (bar)	SDR	Code	Weight (kg)
20	15	16	11	753 798 306	0.016
25	20	16	11	753 798 307	0.034
32	25	16	11	753 798 308	0.046
40	32	16	11	753 798 309	0.067
50	40	16	11	753 798 310	0.098
63	50	16	11	753 798 311	0.157
75	65	16	11	753 798 312	0.258
90	80	16	11	753 798 313	0.347
110	100	16	11	753 798 314	0.471
125	100	16	11	753 798 315	0.517
140	125	16	11	753 798 316	0.780
160	150	16	11	753 798 317	0.973
180	150	16	11	753 798 318	1.077
200	200	16	11	753 798 319	1.734
225	200	16	11	753 798 320	1.772
250	250	16	11	753 798 321	16.091
280	250	16	11	753 798 322	3.760
315	300	16	11	753 798 323	4.925
355	350	16	11	753 798 324	7.000
400	400	16	11	753 798 325	9.500
450	500	16	11	753 798 326	18.200
500	500	16	11	753 798 327	18.700
560	600	16	11	753 798 833	19.380
*	630	600	16	753 798 834	16.500
*	710	700	16	753 798 835	21.586
*	800	800	16	753 798 836	28.505

d (mm)	DN (mm)	d1 (mm)	d2 (mm)	d3 (mm)	d4 (mm)	L (mm)	L1 (mm)	L2 (mm)	e (mm)	Type	a°
20	15	26	45		16	50	29	7	1.9	A	
25	20	32	58		20	52	27	9	2.3	A	
32	25	40	68		26	54	28	10	2.9	A	
40	32	49	78		32	55	25	11	3.7	A	
50	40	60	88		40	62	32	12	4.6	A	
63	50	75	102		49	68	38	14	5.8	A	
75	65	89	122	66	58	80	43	16	6.8	B	30
90	80	105	138	78	70	80	42	17	8.2	B	30
110	100	125	158	100	87	80	41	18	10.0	B	30
125	100	132	158	114	99	82	35	25	11.4	B	25
140	125	155	188	127	111	89	42	25	12.7	B	27
160	150	175	212	151	127	92	40	25	14.6	B	30
180	150	180	212	154	148	92	40	30	16.4	B	30
200	200	232	268	203	174	100	35	32	18.2	B	30

Data sheet

valid from: 11/17/21



	d	DN	d1	d2	d3	d4	L	L1	L2	e	Type	a°
	(mm)	(mm)	(mm)	(mm)	(mm)	(mm)	(mm)	(mm)	(mm)	(mm)		
	225	200	235	268	210	196	100	35	32	20.5	B	30
	250	250	285	320	252	203	120	45	35	22.7	B	25
	280	250	291	320	265	228	120	45	37	25.4	B	30
	315	300	335	370	300	256	150	50	50	28.6	B	22
	355	350	373	430	342	284	162	70	40	32.2	B	45
	400	400	427	482	387	320	172	70	46	36.3	B	45
	450	500	514	585	400	360	225	105	60	40.9	B	15
	500	500	530	585	442	400	231	105	60	45.4	B	15
	560	600	615	684	490	458	141	20	60	50.8	B	30
*	630	600	642	684	545	516	135	40	60	57.2	B	30
*	710	700	737	800		581	120	20	60	64.5	A	
*	800	800	840	905		655	120	18	65	72.6	A	

The technical data are not binding. They neither constitute expressly warranted characteristics nor guaranteed properties nor a guaranteed durability. They are subject to modification. Our General Terms of Sale apply.

Georg Fischer Piping Systems Ltd, Postfach, CH-8201 Schaffhausen/Switzerland
 Phone +41 -(0)52-631 1111
 e-mail: info.ps@georgfischer.com
 Internet: <http://www.gfps.com>