



Profiled backing flange ductile iron metric bolt circle PN 16, d450 – d630
For butt fusion systems metric

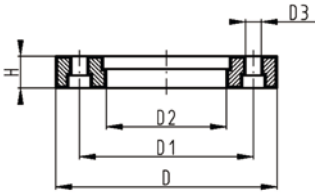
Model:

- Ductile iron (GGG 40), stoved epoxy (black, DIN30677)
- Connecting dimensions: ISO/DIN 2501, EN 1092
- **Bolt circle PN 16**

Note:

Flat side = bolt / washer side
 Profiled side = flange adaptor side (aligned with collar)

AL: number of holes



d	DN	PN	Code	Weight	D	D1	D2	D3	H	AL	SC
(mm)	(mm)	(bar)		(kg)	(mm)	(mm)	(mm)	(mm)	(mm)		
450	500	10	724 705 326	50.500	715	650	517	33	46	20	M30
500	500	10	724 705 327	50.500	715	650	533	33	46	20	M30
560	600	10	724 705 328	50.500	840	770	618	36	55	20	M33
630	600	10	724 705 329	50.500	840	770	645	36	55	20	M33

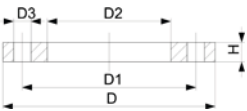


Backing flange steel metric
Bolt Circle PN10
For butt fusion systems metric

Model:

- Material: S235JR / zinc-coated
- Connecting dimensions: ISO 7005, EN 1092, DIN 2501
- **Bolt circle PN 10**

AL: number of holes



d	DN	PN	Code	Weight	D	D1	D2	D3	H	AL	SC
(mm)	(mm)	(bar)		(kg)	(mm)	(mm)	(mm)	(mm)	(mm)		
200	200	10	701 474 383	7.400	340	295	235	22	20	8	M20
225	200	10	701 474 388	7.400	340	295	238	22	20	8	M20
250	250	10	701 474 399	9.090	395	350	288	22	22	12	M20
280	250	10	701 474 400	8.700	395	350	294	22	22	12	M20
315	300	10	701 474 401	12.200	445	400	338	22	26	12	M20
355	350	10	701 480 489	18.300	505	460	376	22	28	16	M20
450	450	10	724 705 026	38.000	615	565	470	26	36	20	M24
400	400	10	701 480 490	22.900	565	515	430	26	32	16	M24
450	500	10	701 480 491	37.000	670	620	517	26	38	20	M24
500	500	10	701 480 492	32.000	670	620	533	26	38	20	M24
560	600	10	701 480 493	53.800	780	725	618	30	42	20	M27
630	600	10	701 480 494	45.100	780	725	645	30	42	20	M27