



**Profiled backing flange ductile iron metric bolt circle PN 16, d450 – d630**  
**For butt fusion systems metric**

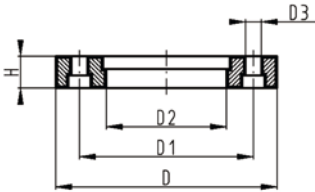
**Model:**

- Ductile iron (GGG 40), stoved epoxy (black, DIN30677)
- Connecting dimensions: ISO/DIN 2501, EN 1092
- **Bolt circle PN 16**

**Note:**

Flat side = bolt / washer side  
 Profiled side = flange adaptor side (aligned with collar)

AL: number of holes



d	DN	PN	Code	Weight	D	D1	D2	D3	H	AL	SC
(mm)	(mm)	(bar)		(kg)	(mm)	(mm)	(mm)	(mm)	(mm)		
450	500	10	<b>724 705 326</b>	50.500	715	650	517	33	46	20	M30
500	500	10	<b>724 705 327</b>	50.500	715	650	533	33	46	20	M30
560	600	10	<b>724 705 328</b>	50.500	840	770	618	36	55	20	M33
630	600	10	<b>724 705 329</b>	50.500	840	770	645	36	55	20	M33

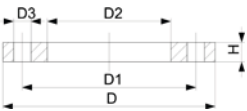


**Backing flange steel metric**  
**Bolt Circle PN10**  
**For butt fusion systems metric**

**Model:**

- Material: S235JR / zinc-coated
- Connecting dimensions: ISO 7005, EN 1092, DIN 2501
- **Bolt circle PN 10**

AL: number of holes



d	DN	PN	Code	Weight	D	D1	D2	D3	H	AL	SC
(mm)	(mm)	(bar)		(kg)	(mm)	(mm)	(mm)	(mm)	(mm)		
200	200	10	<b>701 474 383</b>	7.400	340	295	235	22	20	8	M20
225	200	10	<b>701 474 388</b>	7.400	340	295	238	22	20	8	M20
250	250	10	<b>701 474 399</b>	9.090	395	350	288	22	22	12	M20
280	250	10	<b>701 474 400</b>	8.700	395	350	294	22	22	12	M20
315	300	10	<b>701 474 401</b>	12.200	445	400	338	22	26	12	M20
355	350	10	<b>701 480 489</b>	18.300	505	460	376	22	28	16	M20
450	450	10	<b>724 705 026</b>	38.000	615	565	470	26	36	20	M24
400	400	10	<b>701 480 490</b>	22.900	565	515	430	26	32	16	M24
450	500	10	<b>701 480 491</b>	37.000	670	620	517	26	38	20	M24
500	500	10	<b>701 480 492</b>	32.000	670	620	533	26	38	20	M24
560	600	10	<b>701 480 493</b>	53.800	780	725	618	30	42	20	M27
630	600	10	<b>701 480 494</b>	45.100	780	725	645	30	42	20	M27